

The Universal Measuring Machine for
the Complete Inspection of Gear Cutting Tools

ZOLLER
expect great measures

hobCheck



We Stand for Smart Progress

ECONOMICS

The »hobCheck« universal measuring machine from ZOLLER opens up unprecedented possibilities for the fully automatic and complete measurement of gear cutting tools, threading tools and cutting tools of all kinds.

Invest in the compact top class with the »hobCheck« for the complete measurement of gear cutting and cutting tools. With this shop-floor-ready and cost-effective solution, you can solve complex challenges reliably and with μm accuracy. The swiveling »orthoScan« optics carrier guarantees distortion-free measurement of the tooth contour for tools with a pitch, allowing you to achieve highly precise measurement results.

Fully automatic measuring technology

Comprehensive complete measurement

Certified safety



Detailed Measurement of Gear Cutting Tools

With the ZOLLER »hobCheck«, the quantum leap for your production, you are perfectly equipped for inspection tasks through to fully automatic complete inspection of all types of gear cutting tools. Benefit from higher quality of tools, shorter set-up times on machines, less stock removal during resharpening and complete documentation.

Thanks to the intelligent combination of image processing technology, CNC axes and measuring probes, all important parameters can be measured fully automatically. The distortion-free measurement and inspection of tools with pitches and precision tools of all kinds makes the ZOLLER »hobCheck« the universal genius.



Calibrating measuring machines on site with certified inspection tools and reference standards is an important part of quality assurance at E. ZOLLER GmbH & Co. KG. This enables us to guarantee reliable measurement results and the high precision of your products in accordance with applicable standards.

ZOLLER



Accredited calibration laboratory
according to DIN EN ISO/IEC 17025:2018



Quality Management/Environmental Management
according to ISO 9001, VDA 6.4 and ISO 14001

»hobCheck«

We Stand for Unmatched Precision

TECHNOLOGY

Manufacturing and measuring gear cutting tools is extremely demanding and requires technology at the highest level. The ZOLLER »hobCheck« delivers this level of innovation and precision in every detail and, thanks to its mechanical basis and intelligent clamping technology, guarantees outstanding tool quality.

Every »hobCheck« is a promise to our customers. The functional ergonomics of the machine make it easy to use and maintain. For example, the »cockpit« operating unit can be individually adapted to the needs of the operator. Quick adjustment of the tailstock allows sensitive entry into the tool center, and the automatic pressure build-up ensures that the tools are held securely with constant force and without distortion.

Gear cutting technology is an impressive manufacturing process in itself. Its control requires intelligent measuring technology that checks the quality of every tooth and thus optimizes it. This is how precision works.

WILHELM RAU
Part of the ZOLLER assembly team

- Production at premium level
- Customer-oriented overall concept
- Maximum operating comfort

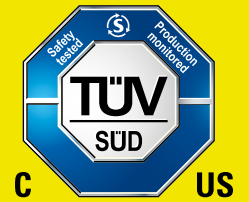


Universal Top Class

»hobCheck« TÜV and UL/CSA Approved

Every »hobCheck« measuring machine is certified according to international standard IEC/EN 61010-1 and cNRTLus.

Proven and certified safety.



Ergonomic one-hand operating handle »eQ« (ergonomic & quick) – to easily move the optics carrier to the correct position in the Z- and X-axes. The button with the Solutions symbol can be individually configured with additional practical functions, making operation even easier and more convenient.

Swiveling multi-sensor optics carrier »orthoScan« – always finds the perfect viewing angle on the tool. This means that the cutting edge geometries of tools with a pitch, such as taps or hob cutters, can be measured in transmitted light without distortion.

Z-, X-axis manual/CNC – the high-precision and smooth-running linear axes are used for fast and fine positioning of the measuring optics to the tool cutting edge. Whether manually for spot checks using the »eQ« one-hand control handle or CNC-controlled for fully automatic processes, these allow the measurement to be carried out safely, quickly and conveniently.

Practical storage board – holds adapter tool posts, adapters, tools and intermediate sleeves.

Incident light camera with multi-LED segment illumination and CNC swiveling device – for the inspection and automatic measurement of tool geometries on the circumference, in the chip space and on the face, as well as for radial wear inspection on the tooth head of hob cutters and for aligning the tools via 3D focus. Simply enter the target parameters in the measuring program dialog and every measured variable is automatically measured and logged: rake angle, radial relief angle, flute contour, chamfer width and many other geometries. The high-performance LEDs, segmented into eight areas, are automatically controlled by the measuring system and ensure optimum illumination thanks to automatic intensity control.

Optics carrier – with integrated CNC-controlled Y-axis and swiveling device for incident light camera and measuring probe enables the fully automatic and complete measurement of gear cutting tools and cutting tools of all kinds.

Pneumatic tailstock – allows long and thin tools to be held as counter centers and clamping between centers. It has a high-precision and moving center. The smooth-running quick adjustment allows sensitive entry into the tool center and the automatic pressure build-up ensures that the tools are held securely without distortion.

Electronic measuring probe – CNC-controlled, swiveling for fully automatic measurement of form and position deviation of the rake faces, pitch of the flutes, flute direction and other parameters.

Software »pilot 4.0« – is self-explanatory, clearly laid out and enables the operator to take reliable measurements. It offers a uniform user interface on all ZOLLER systems – right up to ZOLLER TMS Tool Management Solutions. The individual structure of the software allows customer-specific adaptations to be implemented quickly.

Separate »cockpit« control unit – offers space for keyboard and mouse as well as shelves for label and laser printers, scanners and tools. The height and angle of the 24" TFT color monitor can be adjusted to make using the software as comfortable as possible. This means that every operator can set up the workstation individually in just a few simple steps.

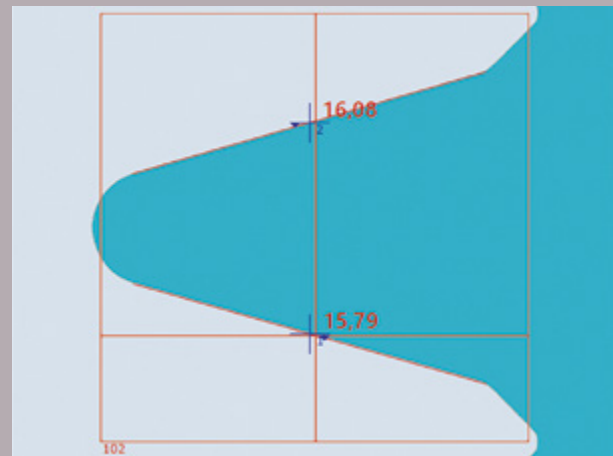
High-precision spindle »ace« – guarantees μm -precise holding and clamping of tools and fixtures of all kinds. Adaptation to many tool holder systems is guaranteed by the universal adapter tool post changing system. The optional CNC drive with autofocus and precise angle measuring system offers automatic focusing of the tool cutting edge and recording of the cutting contour.

Stable table – forms the base of the device. This is where the computer, electronics and pneumatic elements are stored in an industrial and service-friendly manner, all neatly laid out with sufficient space for good accessibility and optimum ventilation.

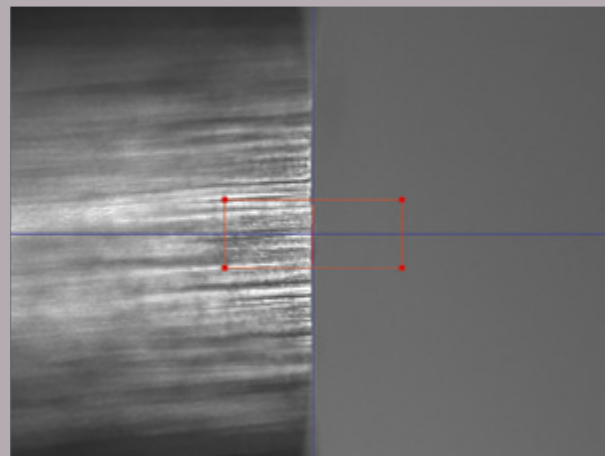


High-Precision Sensors for Gear Cutting Tools

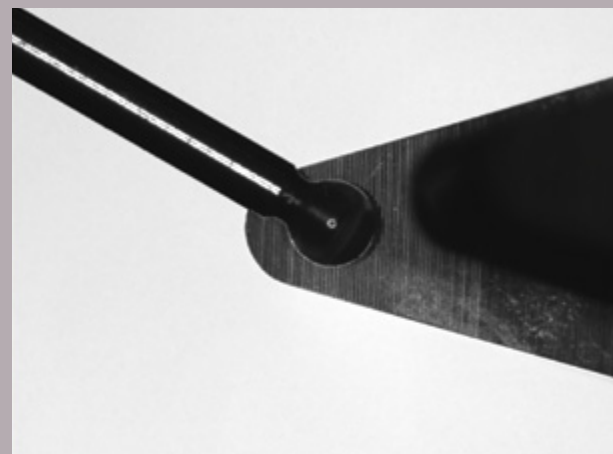
With the ZOLLER »hobCheck«, you can complete tactile measuring without contact in transmitted and incident light. Equipped with a CNC-controlled swiveling optics carrier, electronic measuring probe and transmitted and incident light image processing, parameters such as tooth profile, concentricity/wobble, pitch and many more can be measured automatically on hob cutters in accordance with DIN 3968. The »pilot 4.0« software takes care of all calculations, positioning processes and the assignment of sensors to the respective measuring task. The evaluation of tooth profiles and measured values, the calculation of quality classes and the graphic logging are fully automatic.



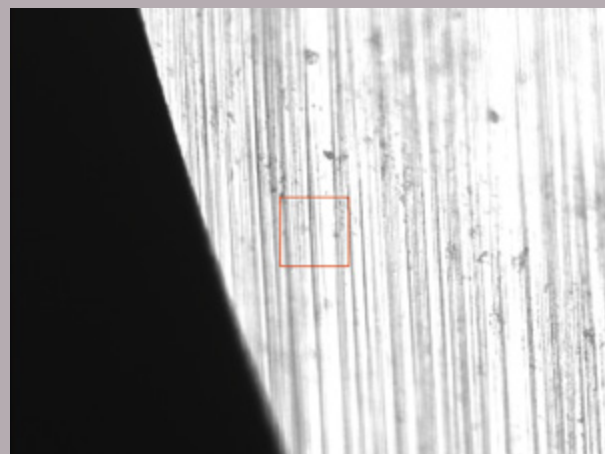
2D transmitted light measurement on the circumference



Incident light focus/2D incident light measurement on circumference



Tactile measurement in the chip space



3D contour measurement (pinion cutter/hob cutter)



Sensors configuration	
Optics transmitted light	
Transmitted light camera HR50, BF approx. 0.28" x 0.26" (7.3 x 6.7 mm ²)	⊙
Transmitted light camera HR70, BF approx. 0.15" x 0.14" (4.0 x 3.6 mm ²)	●
Transmitted light camera 5 Mpx, BF approx. 0.17" x 0.15" (4.4 x 4.0 mm ²)	⊙
Transmitted light camera WF, BF approx. 0.61" x 0.55" (15.5 x 14.1 mm ²)	⊙

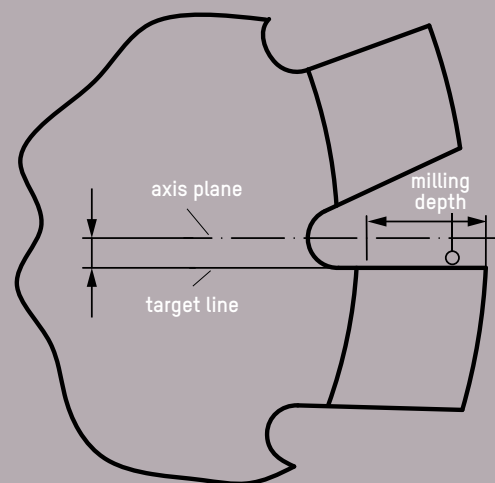
Sensors configuration	
Optics incident light	
Incident light camera HR50 Standard, BF approx. 0.04" x 0.03" (1.1 x 1.0 mm ²)	●
Incident light camera HR50 Micro, BF approx. 0.01" x 0.01" (0.4 x 0.4 mm ²)	⊙
Tactile	
Scanning measuring probe	●
Switching measuring probe	⊙

● Base model ⊙ Optional

Tooth By Tooth in the Focus of the Probe

The electronic measuring probe supplements the ZOLLER sensor system for measurements on undercut surfaces to determine form and position deviation of the rake faces, pitch of the flutes and flute direction. The optics carrier of the »hobCheck« offers unique possibilities for the complete measurement of straight-fluted and helical gear cutting tools thanks to its integrated CNC Y-axis. With the combination of image processing technology, the CNC drive and measuring probe, all important parameters can be measured fully automatically. The advantages are numerous and impressive: fast measurement results, contact-free measurement due to the transmitted and incident light camera, μm -accurate measurement of spiral tools, universal applicability, direct measurement of the tooth profile on the cutting edge and distortion-free recording of the cutting contour.

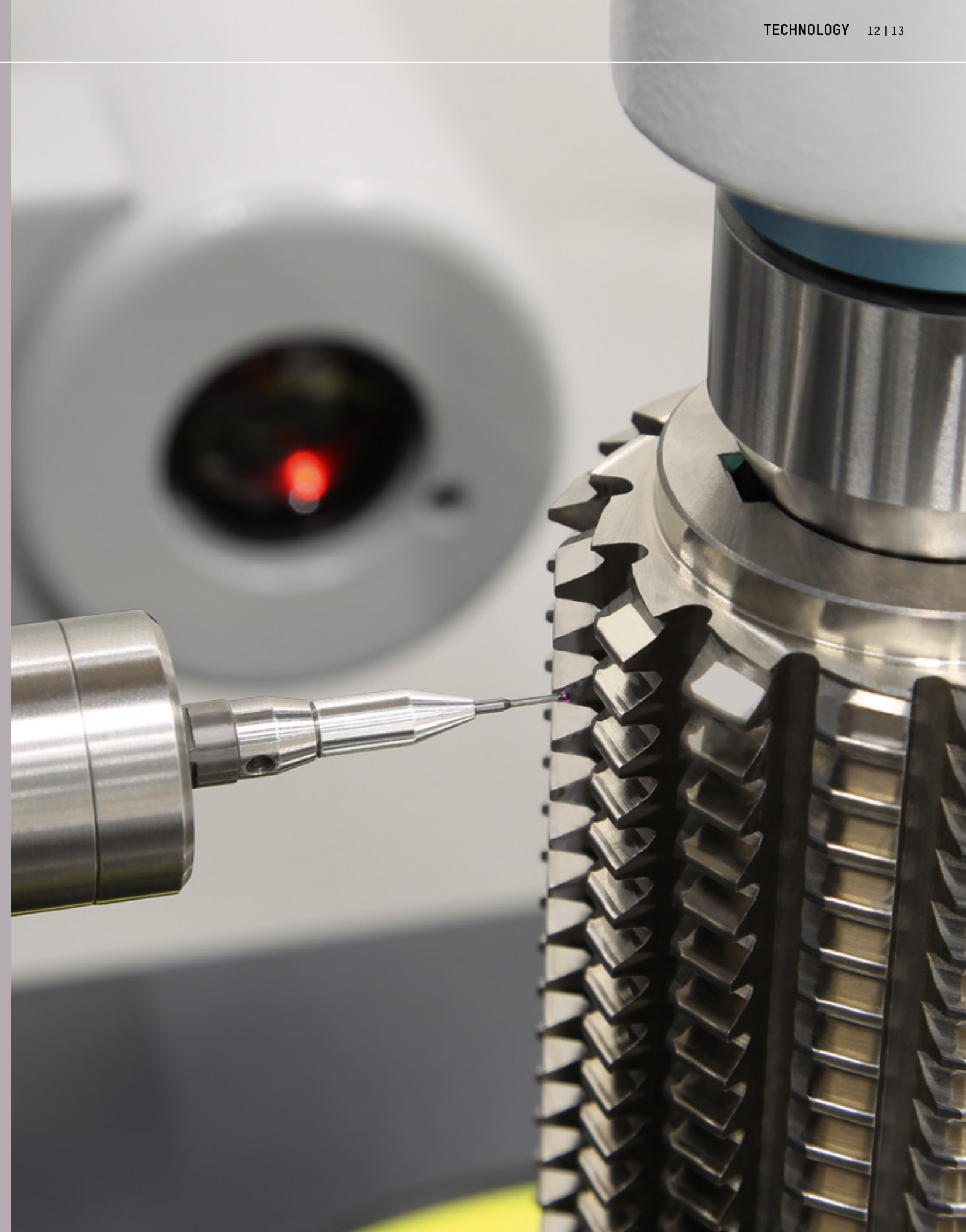
For large, reversible cutting plate tipped hobs and tooth form cutters, ZOLLER offers the »smartCheck 800« as the perfect solution, equipped with a special optics carrier with high-resolution incident light camera for automatic incident light focusing and measurement.



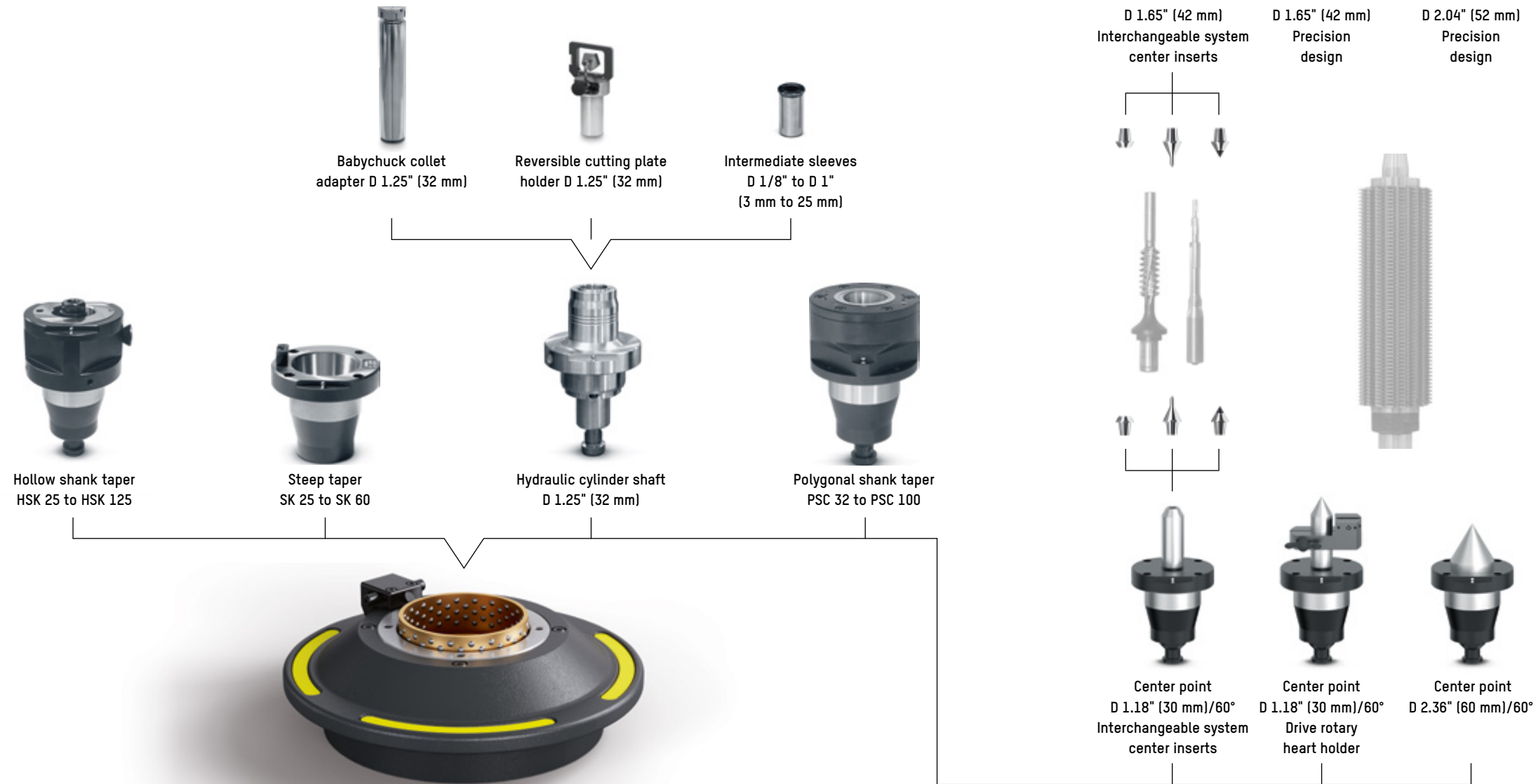
Shape and position deviation of the rake face



Display of results in »pilot 4.0«

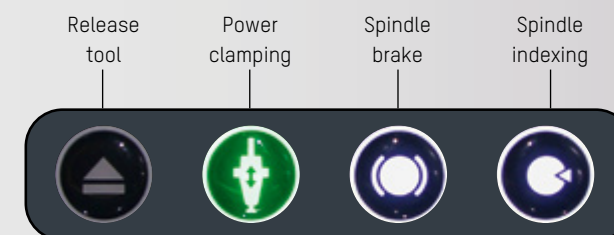


High-Precision Spindle »ace«



High precision spindle »ace« – with power clamping and quick-change system

- Power-operated tool clamping – constant, independent of the user
- High axial and radial run-out accuracy – better than 2 µm
- Ergonomic spindle handwheel – for safe rotation of the spindle and precise focusing of the tool cutting edge
- Pneumatic spindle brake and indexing – for fixing the spindle in the desired position
- High changing accuracy of adapter tool posts – better than 1 µm
- Quick adapter tool post change – in less than 10 seconds
- Integrated calibration spheres on adapter tool posts – for simple, quick and precise determination of the spindle zero point
- Automatic zero point selection – automatic detection and calibration of the adapter tool post used



Software »hobCheck« – Clever, Fast, Perfect

Based on the ZOLLER »pilot 4.0« software, the »hobCheck« software makes the fast and μm -accurate measurement of gear cutting tools child's play. Cylindrical hobs are measured fully automatically and evaluated in accordance with DIN 3968. By specifying the quality class, the tolerances of the measurement parameters are classified accordingly after measurement. For example, the radial/axial run-out of the inspection collars, form and position deviation of the rake face, form deviation of the cutting edge, tooth thickness, flute direction and much more are determined. The measuring process is fully automatic. Depending on the evaluation options, teeth are focused, measurements are carried out optimally for the measuring task using image processing or measuring probes and the optics carrier is swiveled for certain measurements.

Measurable parameters according to DIN 3968:

- Concentricity deviation on inspection collars
- Axial deviation on the clamping surfaces
- Concentricity deviation at the tooth tip
- Form and position deviation of the rake faces
- Individual pitch of the flutes
- Pitch jump of the flutes
- Total pitch of the flutes
- Flute direction over 100 mm cutter length
- Form deviation of the cutting edge
- Tooth thickness on the reference cylinder
- Milling pitch height in pitch direction between any cutting edges of a thread
- Milling pitch height between cutting edges of a thread
- Engagement pitch
- Pressure pitch
- Axial pitch

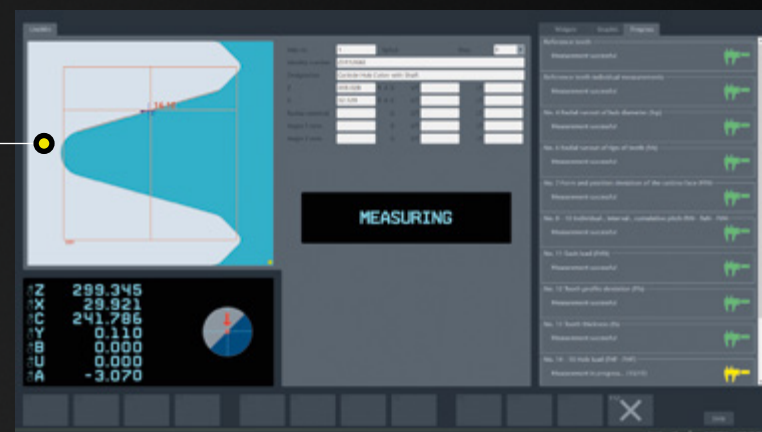
All highlights at a glance:

- Intuitive graphical user interface
- Automatic assignment of the quality class
- Re-measurement function
- Short measuring times
- Combination of image processing and measuring probe
- Representative documentation

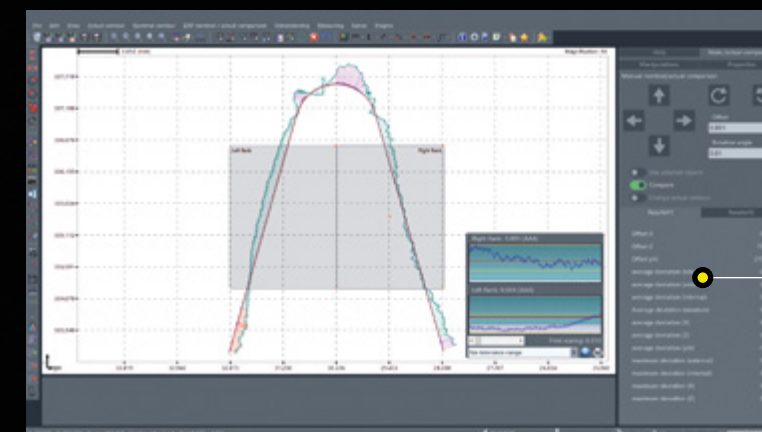
Photo-realistic input dialog »fore« of measuring program 312 for simple data creation



Fully automatic and time-saving measurement with transmitted and incident light image processing and measuring probe



Results display with extensive detailed information for each parameter and re-measurement function



Graphic evaluation of the form deviation of the cutting edge

Solutions for Reversible Cutting Plate Tipped Hobs

Measuring program 313

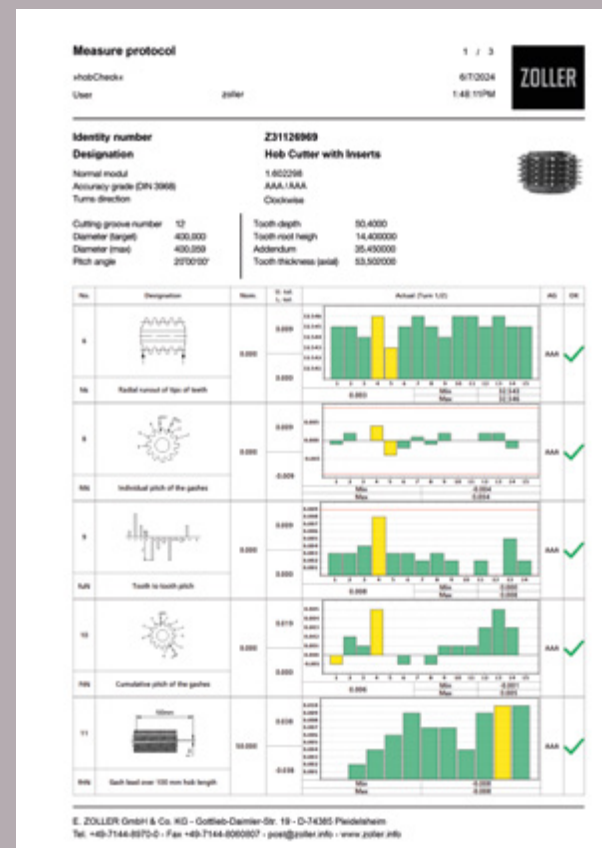
for measuring reversible cutting plate tipped cylindrical hobs with comprehensive evaluation based on DIN 3968. Among other things, concentricity deviation at the tooth head, individual and cumulative pitch and pitch jump of the flutes, flute direction, tooth thickness and cutter pitch height are determined.



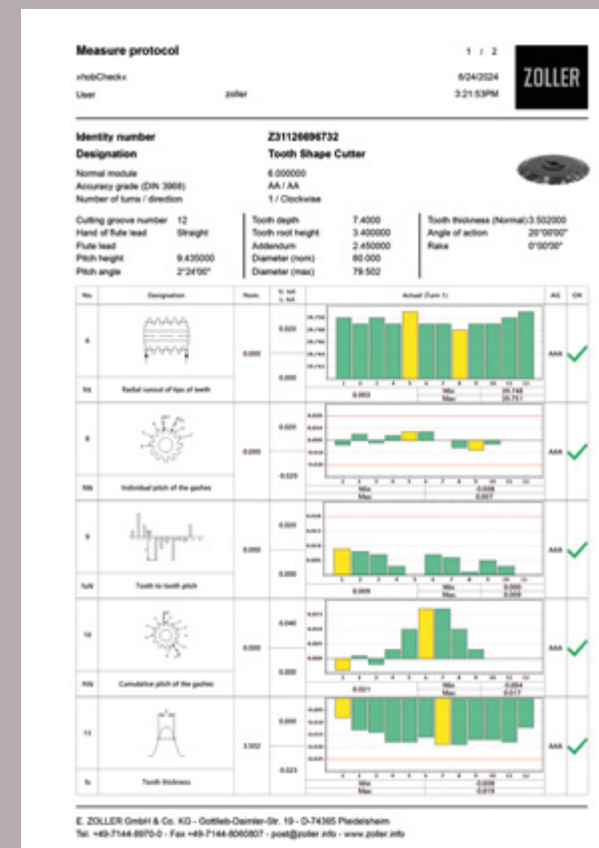
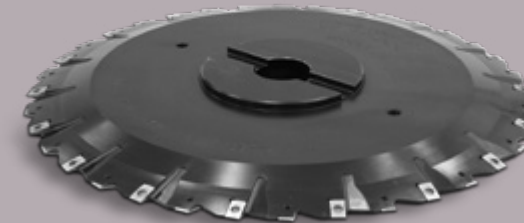
Measuring program 313 – Data creation in the photo-realistic input dialog »fored«.



Measuring program 313 – Results display with detailed information for each parameter and re-measurement function.



Representative inspection report – including parameter selection for internal and external use.



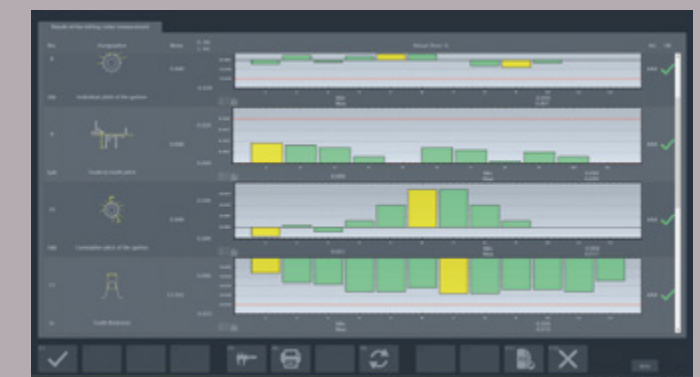
Representative inspection report – including parameter selection for internal and external use.

Measuring program 314

for measuring tooth form cutters with comprehensive evaluation based on DIN 3968. Among other things, concentricity deviation at the tooth tip, individual and cumulative pitch and pitch jump of the flutes, flute direction, tooth thickness and pressure angle 1 and 2 are determined.



Measuring program 314 – Data creation in the photo-realistic input dialog »fored«.

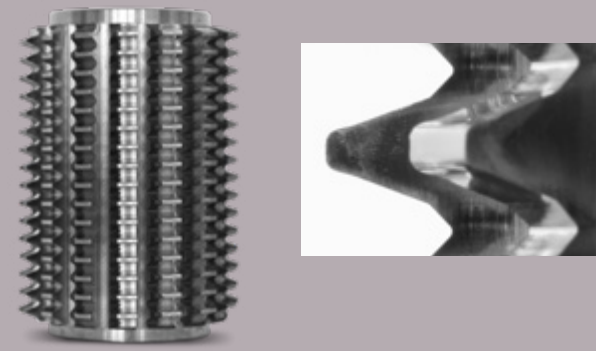


Measuring program 314 – Results display with detailed information for each parameter and re-measurement function.

Inspection of Protuberance and Tooth Flanks

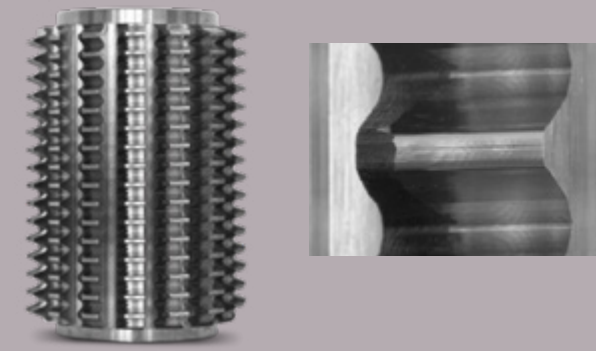
Measuring program 315

for measuring the protuberance on cylindrical hobs. The amount, height and angle of the protuberance and the edge breakage height on the left and right tooth flank are determined.



Measuring program 720

for measuring the axial relief on the tooth flanks of hob cutters. The exact contour of the relief is recorded and analyzed with the scanning measuring probe.



Measuring program 315 – Data creation in the photo-realistic input dialog »fored«.

Measure protocol 1 / 1

JobCheck: 6/5/2024
User: zoller 10:20 12AM

Identity number: Z311267
Designation: Wälzfürer Hartmetall Protuberanz

Normal module: 1.345400
Accuracy grade (DIN 3968): AAA/AAA
Number of turns / direction: 3 / Counterclockwise

Cutting groove number: 19
Hand of flute lead: Straight
Flute lead: 12.700000
Flute height: 4.760000
Flute angle: 47°30'00"

Tooth depth: 4.2700
Tooth root height: 1.8300
Addendum: 2.339750
Diameter (mm):
Diameter (max):

Tooth thickness (l):
Angle of action:
Rate: 15°49'50"
0°00'00"

No.	Designation	Unit	Min.	Max.	Actual (from UTS)	Min.	Max.	OK
100	Protuberance amount	0.000	0.000	0.000	0.000	0.000	0.000	✓
101	Protuberance height	0.000	0.000	0.000	0.000	0.000	0.000	✓
102	Protuberance angle	0°00'00"	0°00'00"	0°00'00"	0°00'00"	0°00'00"	0°00'00"	✓
103	Chamber height	0.000	0.000	0.000	0.000	0.000	0.000	✓

E. ZOLLER GmbH & Co. KG - Gottlieb-Damm-Str. 19 - D-74385 Plodtzheim
Tel. +49-7144-8970-0 - Fax +49-7144-898007 - post@zoller.info - www.zoller.info

Representative inspection report – including parameter selection for internal and external use.

Measure protocol 1 / 3

JobCheck: 6/5/2024
User: zoller 4:52 48PM

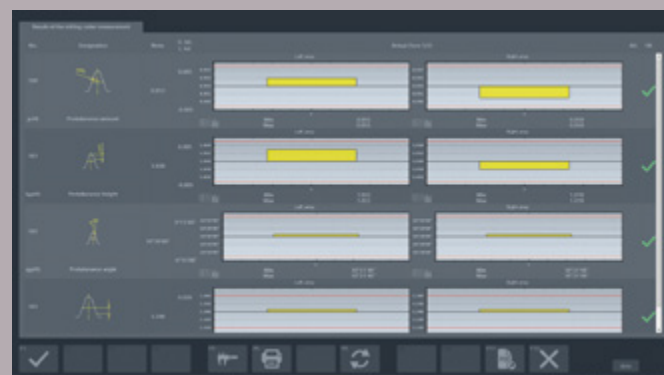
Identity number: Z311266
Designation: Carbide Hob Cutter with Shaft

E. ZOLLER GmbH & Co. KG - Gottlieb-Damm-Str. 19 - D-74385 Plodtzheim
Tel. +49-7144-8970-0 - Fax +49-7144-898007 - post@zoller.info - www.zoller.info

Report printout – of all measured axial relief grindings as a graphical progression and angle specification.



Measuring program 720 – Data creation in the photo-realistic input dialog »fored«.



Measuring program 315 – Results display with detailed information for each parameter and re-measurement function.

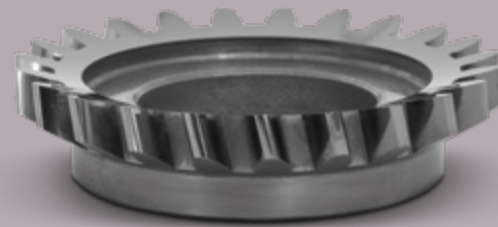


Measuring program 720 – Result display of all measured undercuts as measured values and graphics including zoom function for a detailed analysis.

Inspection of Pinion and Hob Cutting Wheels

Measuring program 412

for tactile measurement of cutting wheels with measuring probe and evaluation according to DIN 1829. Straight and helical cutting wheels can be measured. The axial run-out, rake angle at the tooth tip and the rake face pitch angle (for helical cutting wheels) are determined.

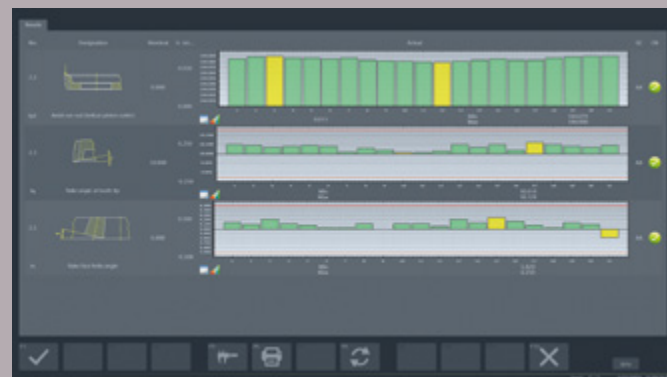


Measuring program 512

for the measurement of hob cutting wheels in transmitted and incident light with evaluation according to DIN 1829. Concentricity deviation on pitch and tip circle, individual pitch deviation left/right, pitch step left/right, total pitch deviation left/right, tooth thickness variation, rake angle on tooth tip and rake face pitch angle are determined.



Measuring program 412 – Data creation in the photo-realistic input dialog »fored«.



Measuring program 412 – Results display with detailed information for each parameter and re-measurement function.



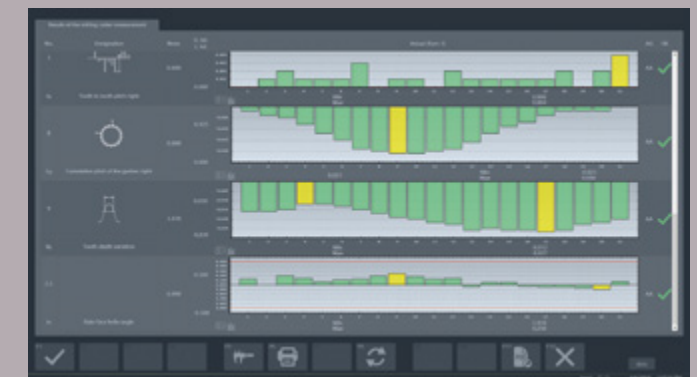
Representative inspection report – including parameter selection for internal and external use.



Representative inspection report – including parameter selection for internal and external use.



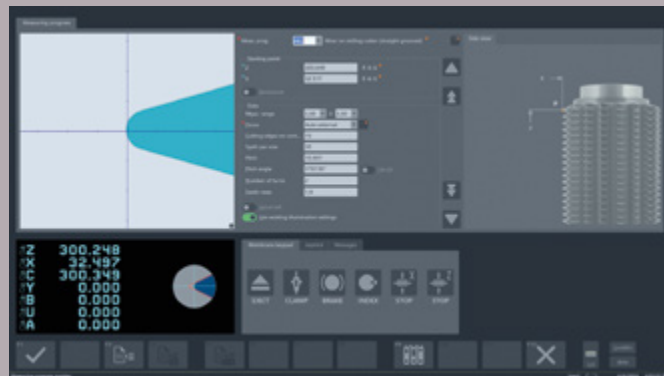
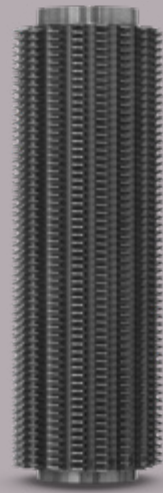
Measuring program 512 – Data creation in the photo-realistic input dialog »fored«.



Measuring program 512 – Results display with detailed information for each parameter and re-measurement function.

Precise Wear Control on Hob Cutters

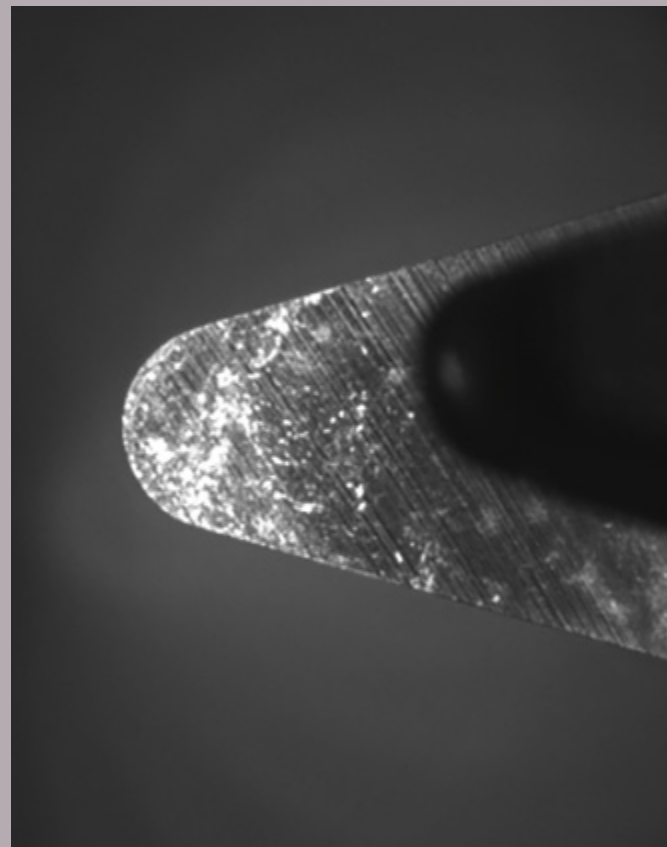
Measuring program 482 for automatic image acquisition of the teeth on circumference and in chip space of cylindrical hobs. Display of the cutting edge images including measuring function for simple, fast determination of the greatest wear. This enables the optimization of the resharpening process and ensures neither too much or too little resharpening.



Measuring program 482 – Data creation in the photo-realistic input dialog »fored«.

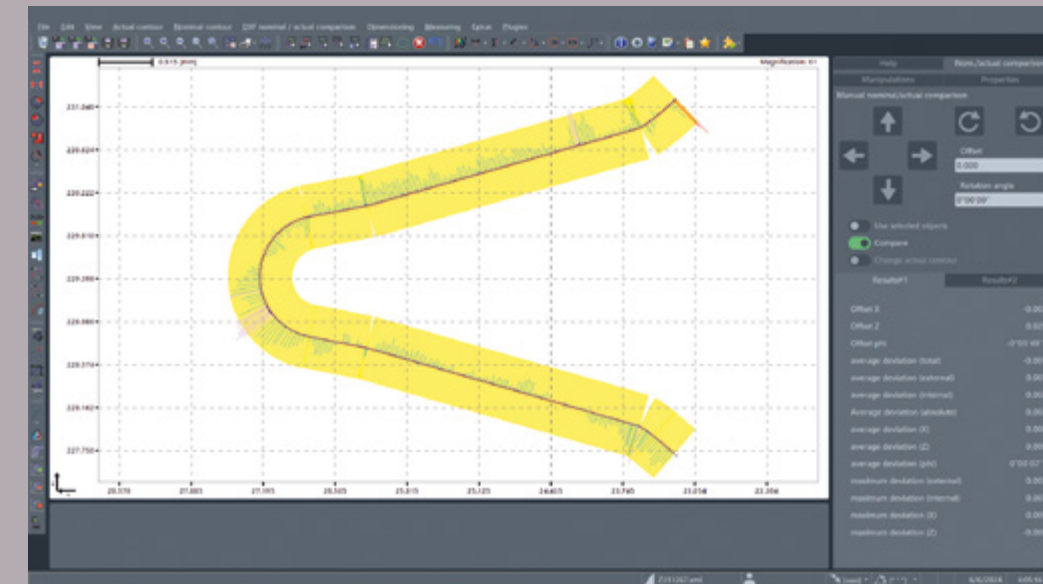


Measuring program 482 – Overview of the recorded cutting edge images including measuring function for determining wear.

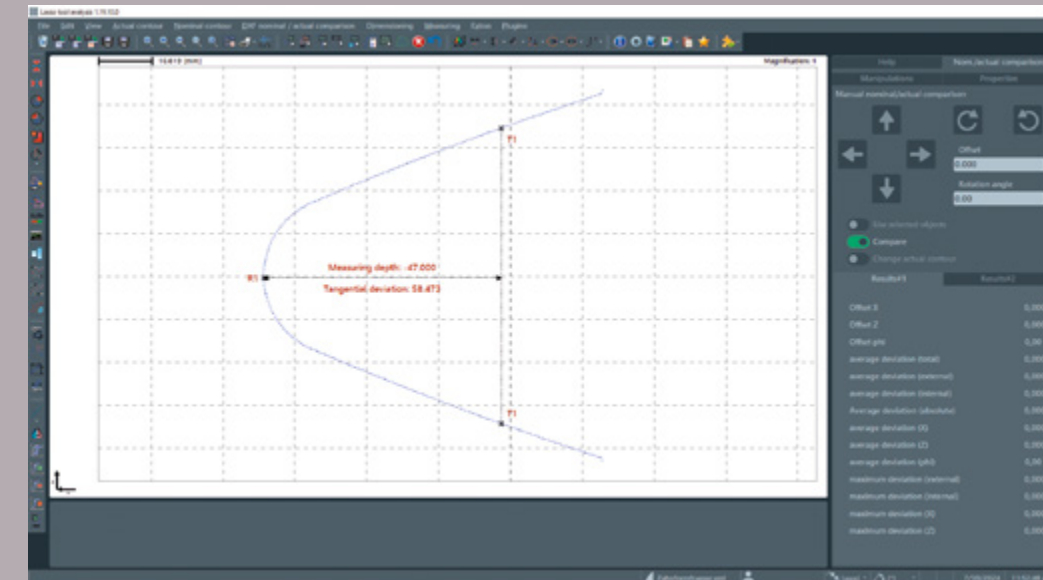


Cutting edge view chip space

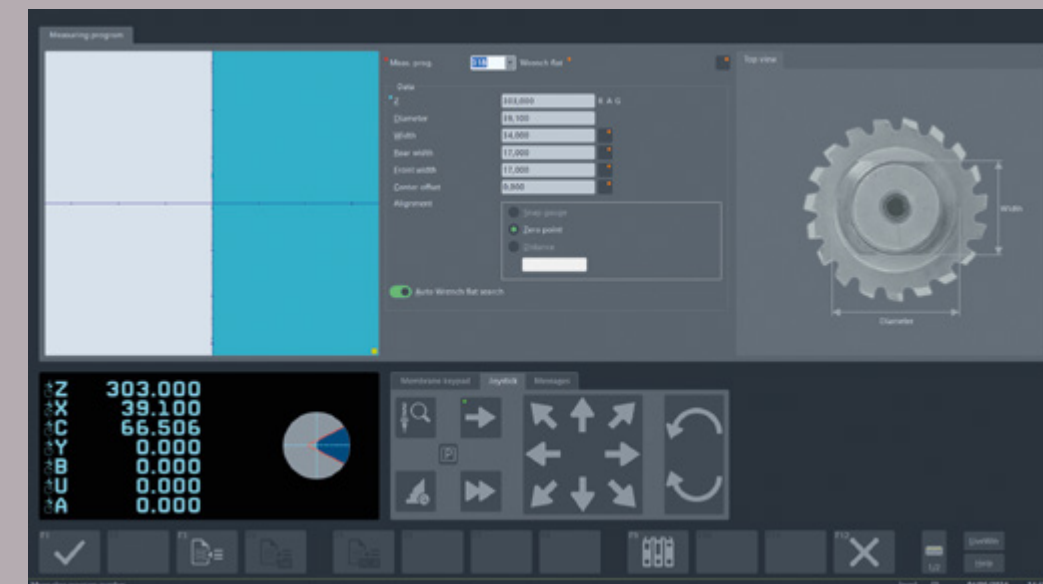
Further Software Functions for Hob Cutters:



Measuring program 80 – the contour measurement »lasso« enables the automatic nominal/actual comparison of the tooth contours using a DXF nominal contour.



»lasso« tooth form cutter plugin – for automatic determination of the tooth width with freely definable measuring depths starting from the tooth tip.



Measuring program 318 – for automatic measurement of the width and center offset of the wrench flat on hobs using the measuring probe.

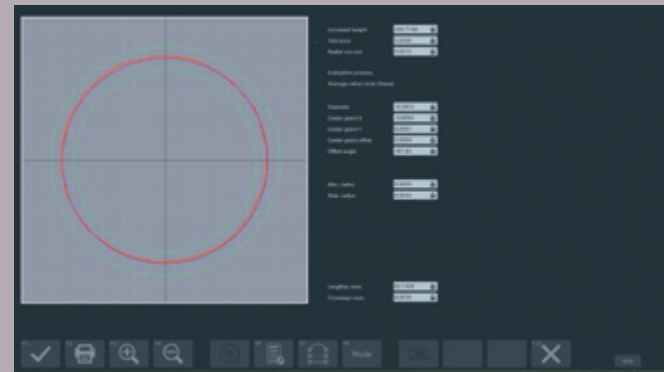
Solutions for Standard Tools

Further measuring programs at a glance:

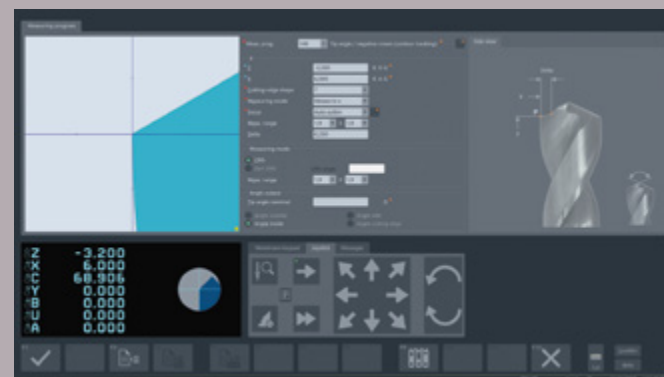
- »metis«-Interpreter
- PCD face and corner milling cutters
- Thread cutter (incident light)
- Thread cutter (transmitted light)
- PSC contour measurement
- Variable helix pitch
- Axial run-out
- Christmas tree cutter
- Concentricity thread
- Flank difference face
- HM deep hole drilling heads
- Skiving cutter
- Grinding wheels/packages
- Saw blades
- Cylindricity/taper
- Radius contour »contur« (sector)
- Radius contour end mills (sector)
- »apus«-Calculator
- Radius concentricity
- Roundness measurement

Further software functions at a glance:

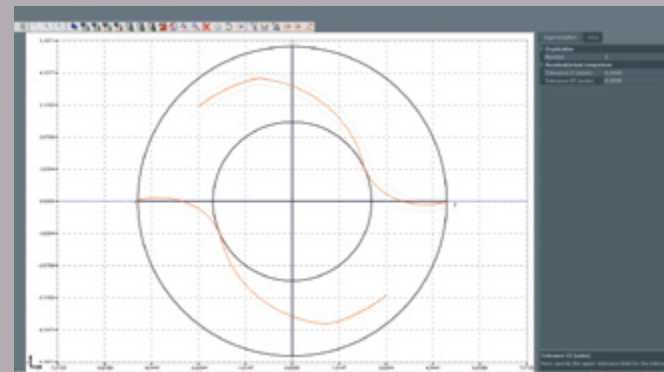
- Collective report
- Customer-specific test report
- File logging
- Concentricity and wobble compensation
- Cutter template package
- Drill template package
- Expert template KenTIP
- Cutting edge preparation »skp«
- Cutting edge symmetry and angle
- Symmetry drill head
- Reference tooth via helix angle
- Chisel edge length-face-IMF
- Cut-out length-face
- Corner radius step tools
- Contour correction »coCon«
- Macro editor »lasso«
- »metis«-Generator
- Microsoft SQL server database interface



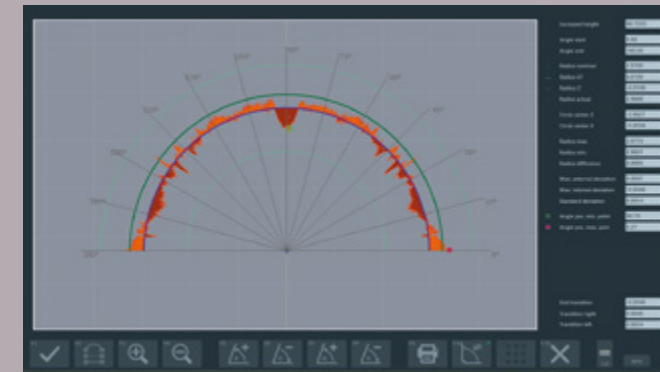
Concentricity check 360° – to automatically determine the radial run-out on circular surfaces (e.g. tool shank) and graphically evaluate the entire contour.



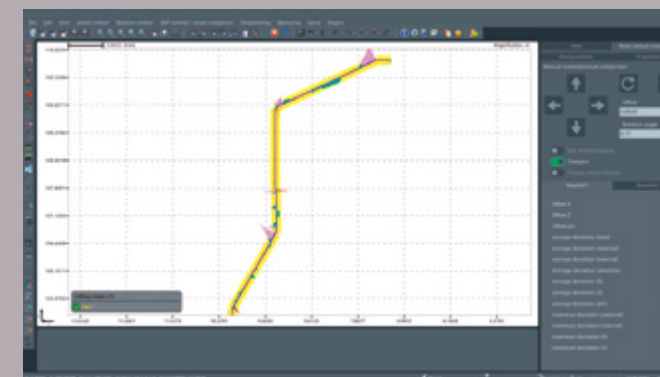
Point angle with hollow grinding – is determined on drilling tools and hollow-ground tool cutting edges from the starting point (outside diameter) to the tool tip or the defined end point by contour tracking.



Flute/chip space scan – automatically scans the flute/chip space contour without contact and displays it graphically.



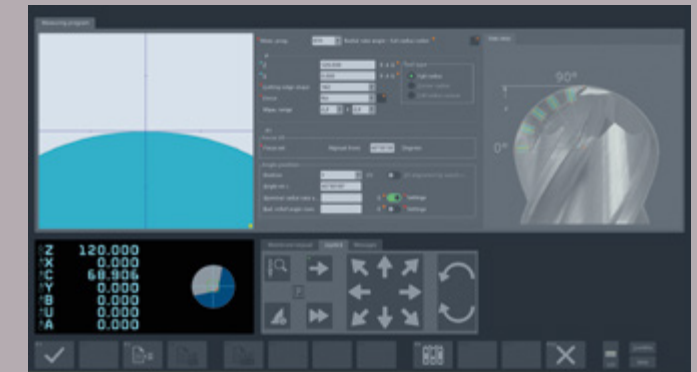
Radius contour »contur« with graphics – for automatic determination of concave and convex radii on the outer contour of tools including adjustable angle sectors with graphic evaluation.



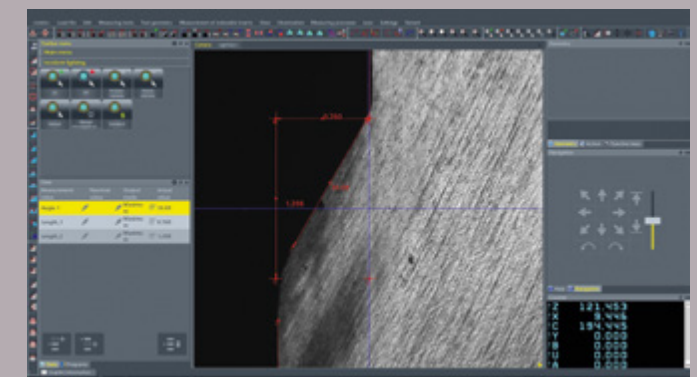
Contour measurement »lasso« – to scan any tool and workpiece contours and perform a nominal/actual comparison or dimensioning of the contour.



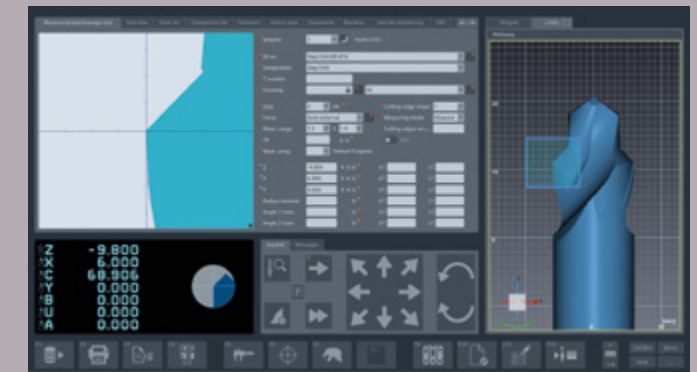
Editable inspection report »apus« – to display all measurement results including designations, nominal values, tolerances and much more in tabular form and flexibly in the layout.



Rake angle on radius cutters – determines the rake angle in the radius segment at the specified angles. Suitable for die, corner and full radius cutters.



Tool analysis »metis« – measures and documents any contours, radii, angles, distances and defects (wear) in incident light.



ZOLLER »caz« – the virtual measuring device for PC workstations for external creation of the inspection and measuring process including measuring programs, nominal values and tolerances using the 3D model of the tool before it is manufactured.

»elephant 2.0« – Extremely Easy to Operate

The »elephant 2.0« measuring program wizard enables simple, user-independent measurement and parameterization of standard tools without entering the target data. Using the graphical selection dialog, the desired tool category can be selected and a specific measurement task can be activated. Typical parameters are available depending on the selected tool type. The »elephant 2.0« software is based on innovative AI technology.

Advantages of ZOLLER »elephant 2.0«

- Execution of measurement sequences without special prior knowledge
- Simple selection dialog for defining standard tools
- Storage of measurement sequences in the database



Intelligent searches automatically determine the tool dimensions, including the number of cutting edges. The operator is graphically supported in positioning the cutting edge and measuring window. The tool measurement is then carried out fully automatically and the generated sequence can be saved for repeat measurements and supplemented as required, for example with tolerances.

01. Select tool type,
e.g. end mill
> end mill with corner radius

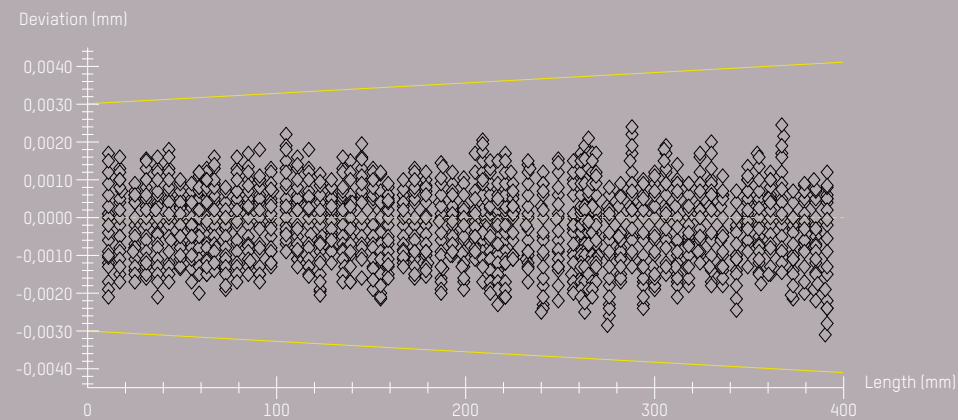
02. Select the desired parameters

03. Active measurement
e.g. cutting contour
corner radius

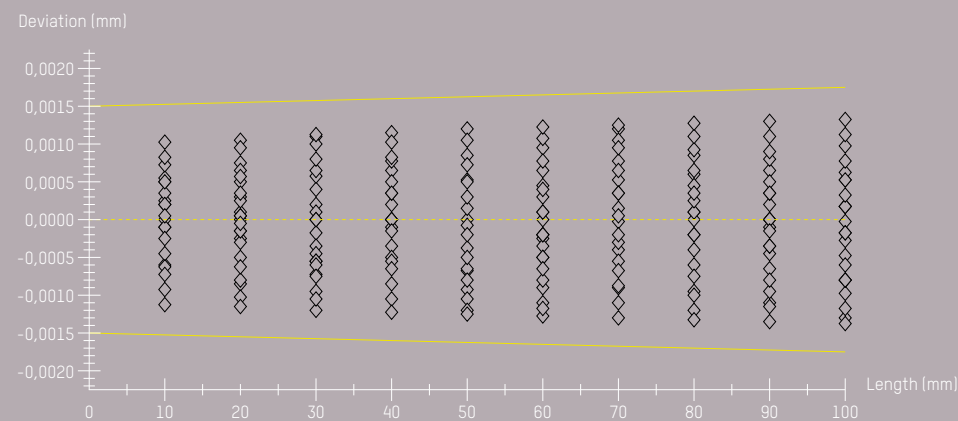
04. Measurement results
(measured fully automatically and
without data input/programming)

Two-Dimensional Guaranteed Quality

The demands in quality management are constantly increasing. That means you must be able to rely on the constant measuring deviations of your machines. In ZOLLER measuring machines, high-precision calibration standards made of Borofloatglas® are used to determine the length measurement deviations based on the DIN EN ISO 10360 standard. In accordance with this standard, at least three measuring sequences (25,326 relationships) are carried out. With this procedure, the accuracy of the ZOLLER measuring machines is documented in two dimensions and can be traced at any time.



Two-dimensional – based on DIN EN ISO 10360, $E_{xy} = 3.0 \mu\text{m} + (L/250 \text{ mm}) \mu\text{m}$



One-dimensional – according to VDI/VDE 2617, $E_x = 1.5 \mu\text{m} + (L/300 \text{ mm}) \mu\text{m}$

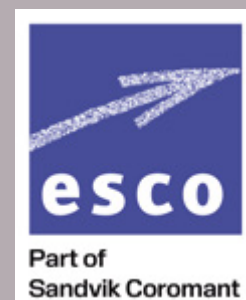


Interfaces – Precisely Networked

ZOLLER ensures the fast, complete and automatic provision of your hob data. The interface available for this purpose ensures direct communication between your »hobCheck« measuring machine from ZOLLER and the esco PTM software for tool design and production automation. The esco interface impresses first and foremost with its user-friendly design – complete tool data records can be imported quickly and error-free at the touch of a button. Both today and into the future, automated data creation is an important and decisive component for efficient production.

ZOLLER interfaces are the basis for smooth processes and open up new avenues for savings and increased productivity.

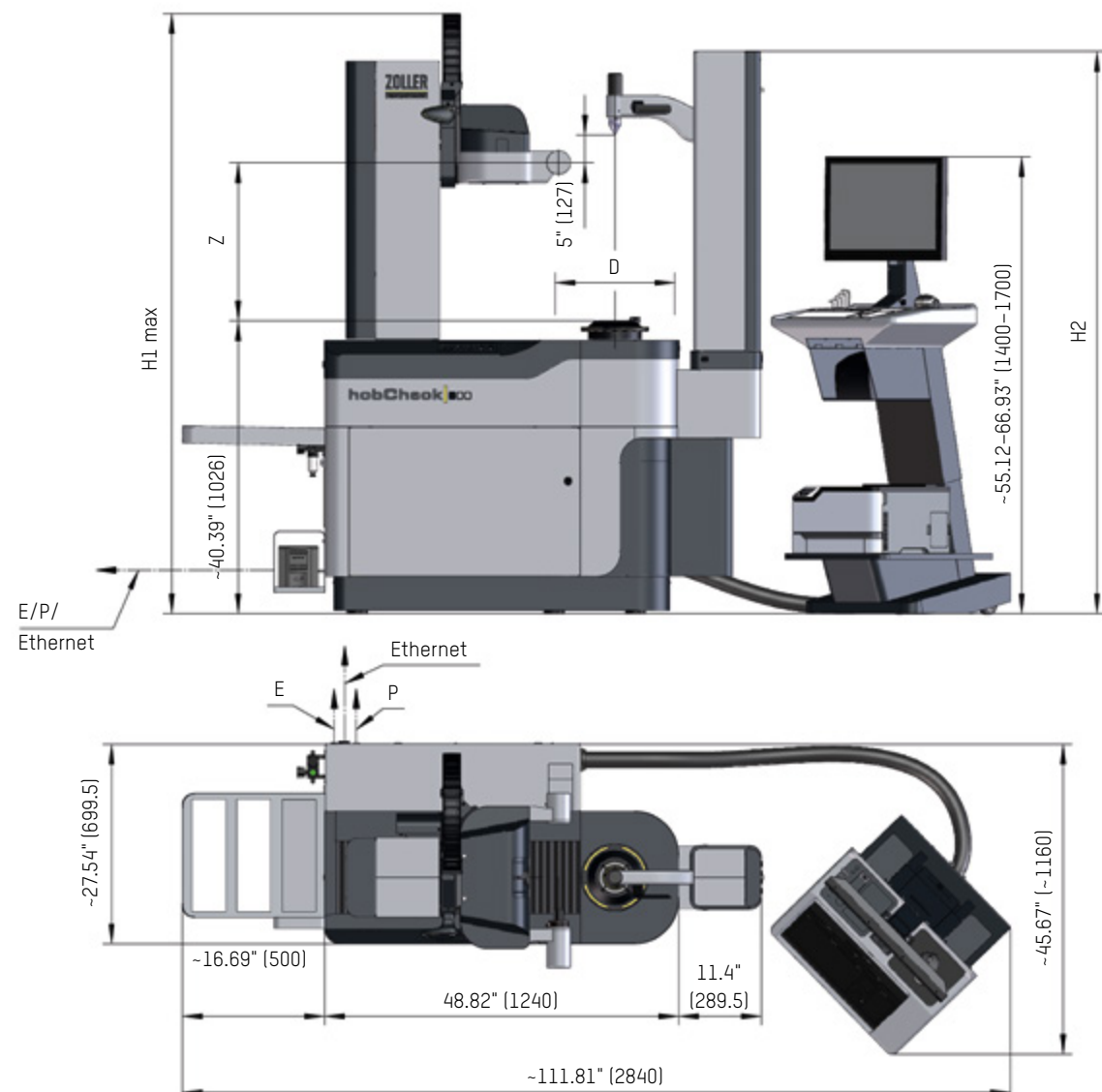
The ZOLLER »hobCheck« measuring machine communicates with esco – for reliable networking of your production processes.



- 1A esco PTM software for automated data creation for measuring
- or
- 1B Data creation in »caz« including simulation or on the »hobCheck«
- 2 Grinding of the first hob cutter and transfer to the »hobCheck«
- 3 Measurement of the first hob cutter and transfer of the correction values
- 4 Series production with random sampling or 100% inspection
- 5 Delivery with inspection report

Installation Dimensions and Technical Data

Technical data »hobCheck«					
Maximum tool length Z	Maximum tool diameter D	Maximum snap gauge diameter d	Travel range Y-axis	Weight	Height H1 max/H2
23.62" (600 mm)	16.54" (420 mm)	3.94" (100 mm)	± 1.57" (40 mm)	~ 542 kg	~ 82.92" (2106mm)/~ 77.56" (1970 mm)
31.49" (800 mm)	16.54" (420 mm)	3.94" (100 mm)	± 1.57" (40 mm)	~ 557 kg	~ 90.78" (2306mm)/~ 85.43" (2170 mm)
39.37" (1000 mm)	16.54" (420 mm)	3.94" (100 mm)	± 1.57" (40 mm)	~ 572 kg	~ 98.66" (2506mm)/~ 93.31" (2370 mm)



Technical data	
Axes	
One-hand control handle »eQ«	●
CNC drive (Z, X)	●
C-axis angle measuring system	●
CNC/autofocus	●
CNC/Y-axis	●
CNC/swiveling optics carrier (A)	●
Electronics	
24" TFT color monitor with software »pilot 4.0«	●
Separate control unit »cockpit«	●
Spindle	
High-precision spindle »ace« size 1	●
High-precision spindle »ace« size 2	⊙
Tailstock	
Pneumatic counter center	⊙
Pneumatic counter center – variable clamping pressure	⊙

Technical data	
Camera/sensos configuration	
Transmitted light camera HR50, BF approx. 0.28" x 0.26" (7.3 x 6.7 mm ²)	⊙
Transmitted light camera HR70, BF approx. 0.15" x 0.14" (4.0 x 3.6 mm ²)	●
Transmitted light camera 5 Mpx, BF approx. 0.17" x 0.15" (4.4 x 4.0 mm ²)	⊙
Transmitted light camera WF, BF approx. 0.61" x 0.55" (15.5 x 14.1 mm ²)	⊙
Incident light camera HR50 Standard, BF approx. 0.04" x 0.03" (1.1 x 1.0 mm ²)	●
Incident light camera HR50 Micro, BF approx. 0.01" x 0.01" (0.4 x 0.4 mm ²)	⊙
Cutting edge inspection LED incident light	●
Scanning measuring probe	●
Switching measuring probe	⊙
Machine table	
Integrated	●
Tool identification	
RFID Manual »mslz«	⊙
RFID Automatic/drive slot	⊙
Code scanner Automatic/drive slot	⊙

Note: P Air connection, ø 6 E Electrical connection Installation dimensions in inch (and in mm)

● Base model
⊙ Optional

Pioneering Efficiency for your Grinding Shop

The highest potential for greater efficiency lies outside the grinding machine: ZOLLER Solutions stand for your future – we make you more successful. If you can manufacture your parts faster and more efficiently, you can work more economically and invest in the future. If economic progress is your goal, then ZOLLER is your partner.



Made in Germany – Available Wherever You Are

Your Advantage
ZOLLER presence

Global. Close. Personal.

ZOLLER quality is “made in Germany” and there for you, anywhere in the world.

Our company has its own locations and branches at 85 sites in 62 countries, guaranteeing we are close to customers and can provide first-class, personal customer service in local markets.

- Parent company
- Headquarters
- Branch office
- Representative

GERMANY

HEADQUARTERS

E. ZOLLER GmbH & Co. KG
Einstell- und Messgeräte
Gottlieb-Daimler-Straße 19
D-74385 Pleidelsheim
Tel: +49 7144 8970-0
Fax: +49 7144 8970-70191
post@zoller.info | www.zoller.info

ZOLLER NORTH

E. ZOLLER GmbH & Co. KG
Service- und Vertriebszentrum
D-30179 Hannover

ZOLLER EAST

E. ZOLLER GmbH & Co. KG
Service- und Vertriebszentrum
D-04158 Leipzig

ZOLLER WEST

E. ZOLLER GmbH & Co. KG
Service- und Vertriebszentrum
D-40764 Langenfeld

EUROPE

AUSTRIA

ZOLLER Austria GmbH
A-4910 Ried im Innkreis
office@zoller-a.at | www.zoller-a.at

SWITZERLAND

ZOLLER Schweiz GmbH
CH-9016 St. Gallen
info@zoller-ch.com | www.zoller-ch.com

FRANCE

ZOLLER France
F-67380 Lingolsheim
info@zoller.fr | www.zoller.fr

SPAIN + PORTUGAL

ZOLLER Ibérica S.L.
E-08005 Barcelona
correo@zoller.info | www.zoller.info

SWEDEN

ZOLLER Sweden AB
SE-63221 Eskilstuna
info@zoller-se.com | www.zoller.info

TURKEY

ZOLLER Ölçüm Teknolojileri San.ve Tic. Ltd. Sti.
TR-16120 Nilüfer / Bursa
info@zoller-tr.com | www.zoller-tr.com

RUSSIA

LLC ZOLLER Russia
RU-111123 Moscow, Russia
info@zoller-ru.com | www.zoller-ru.com

ISRAEL

ZOLLER Israel GmbH
Ramat Yishay 3009500
info@zoller-il.com | www.zoller.info

POLAND

ZOLLER Polska Sp. z o.o.
63-100 Śrem
biuro@zoller-a.at | www.zoller.net.pl

CZECH REPUBLIC + SLOVAKIA

ZOLLER Czech s.r.o.
602 02 Brno
info@zoller.cz | www.zoller.cz

AMERICA

USA

ZOLLER Inc.
North American Headquarters
USA-48108 Ann Arbor, MI
sales@zoller-usa.com | www.zoller.info/us

ZOLLER Inc. Pacific

USA-90503 Torrance, CA
sales@zoller-usa.com | www.zoller.info/us

CANADA

ZOLLER Canada Inc.
CAN-LSN 8G4 Mississauga, ON
sales@zoller-canada.com | www.zoller.info/ca

MEXICO

ZOLLER Tecnologías S de R.L. de C.V.
MEX-C.P. 76030 San Angel Querétaro
sales@zoller-mexico.com | www.zoller.info/mx

BRAZIL

ZOLLER do Brasil
BRA-CEP 13284-198 Nova Vinhedo,
Vinhedo - São Paulo
comercial@zoller-br.com | www.zoller-br.com

ASIA

INDIA

ZOLLER India Private Ltd.
IN-Pune 411019 Maharashtra, India
info@zoller-in.com | www.zoller-in.com

CHINA

ZOLLER Shanghai, Ltd.
Asia Pacific Regional Headquarter
RC-201108 Shanghai
info@zoller-cn.com | www.zoller-cn.com

ZOLLER Asia Pacific, Ltd.

RC-Kowloon, Hongkong
info@zoller-cn.com | www.zoller-cn.com

JAPAN

ZOLLER Japan K. K.
JP-564-0037 Osaka, Japan
info@zoller-jp.com | www.zoller-jp.com

THAILAND

ZOLLER (Thailand) Co. Ltd.
Amphur Muang Chonburi, TH-20000 Thailand
info@zoller-in.com | www.zoller-th.com

INDONESIA

ZOLLER Singapore Pte. Ltd
Indonesia Representative Office
Tambun-17510, Bekasi, Jawa Barat
info@zoller-in.com | www.zoller-in.com

SINGAPORE

ZOLLER Singapore Pte. Ltd
SG-199589 Singapore
info@zoller-in.com | www.zoller.info

MALAYSIA

ZOLLER MALAYSIA SDN. BHD.
Malaysia Representative Office
MY-Petaling Jaya | Selangor Darul Ehsan, Malaysia
lau@zoller-my.com | www.zoller-in.com

VIETNAM

ZOLLER Vietnam
VNM-Ho Chi Minh City, Vietnam
info@zoller-in.com | www.zoller-in.com

KOREA

ZOLLER Korea Co., Ltd.
KOR-15119 - Siheung-Si, Gyeonggi-Do, Südkorea
info@zoller-kr.com | www.zoller-kr.com

REPRESENTATIVES

Argentina, Australia, Belgium, Bolivia, Chile, Colombia, Costa Rica, Croatia, Denmark, Estonia, Finland, Great Britain, Hungary, Iran, Ireland, Italy, Lettland, Latvia, Luxembourg, New Zealand, The Netherlands, Norway, Pakistan, Peru, Romania, Saudi Arabia, South Africa, Southern Tyrol, Taiwan, United Arab Emirates, Venezuela.



Your Customer Portal
www.myzoller.com

simple. direct. online.

ZOLLER Solutions

More speed, higher quality, safe processes – with ZOLLER, you increase the efficiency of your production. ZOLLER offers you outstandingly precise devices for adjusting, measuring and testing cutting tools, software, interfaces, cloud services and solutions for the automation of tool processes. You can combine all of this to create your individual system solution – on your way to the smart factory.

Presetting & Measuring

Tool Management

Inspection & Measuring

Automation

Everything from a Single Source.
Everything for your Success.
Everything with ZOLLER Solutions.

North American Headquarters

ZOLLER Inc.
3900 Research Park Drive
Ann Arbor, MI 48108, USA
Phone: +1 734-332-4851
sales@zoller-usa.com | zoller.info/us

West Coast Office

ZOLLER Inc. Pacific
3882 Del Amo Blvd., Suite #603
Torrance, CA 90503, USA
Phone: +1 424-247-0180
sales@zoller-usa.com | zoller.info/us

Canadian Office

ZOLLER Canada Inc.
2820 Argentia Road, Unit 5
Mississauga, ON L5N 8G4, Canada
Phone: + 1 905-821-7664
sales@zoller-canada.com | zoller.info/ca

Mexican Office

ZOLLER Tecnologías S de R.L. de C.V.
Av. Fray Luis de León 8002 TB P5
Col. Centro Sur, C.P 76090 Querétaro, Qro., México
Phone: +52-442-244-9402
sales@zoller-mexico.com | zoller.info/mx

ZOLLER
expect great measures