

Process-Oriented Compact Solutions
for Tool Inspection

ZOLLER
expect great measures

pomBasic



We Stand for Smart Progress

ECONOMICS

Do you want to speed up your work processes? Then take the shortcut for tool measurement and inspection. The ZOLLER »pomBasic« and »pomBasicMicro« inspection machines are the ideal solution for well-thought-out, economically structured preparation and production of precision tools.

Save yourself unnecessary trips to the measuring room and benefit from efficient processes and precise results in record time. With their compact dimensions, the ZOLLER »pomBasic« and »pomBasicMicro« inspection machines can be positioned anywhere in your production – directly next to the CNC grinding machine, in the goods receipt area or at the tool issue.

Compact inspection and measuring technology

Convenient operator guidance

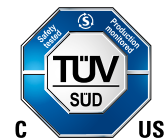
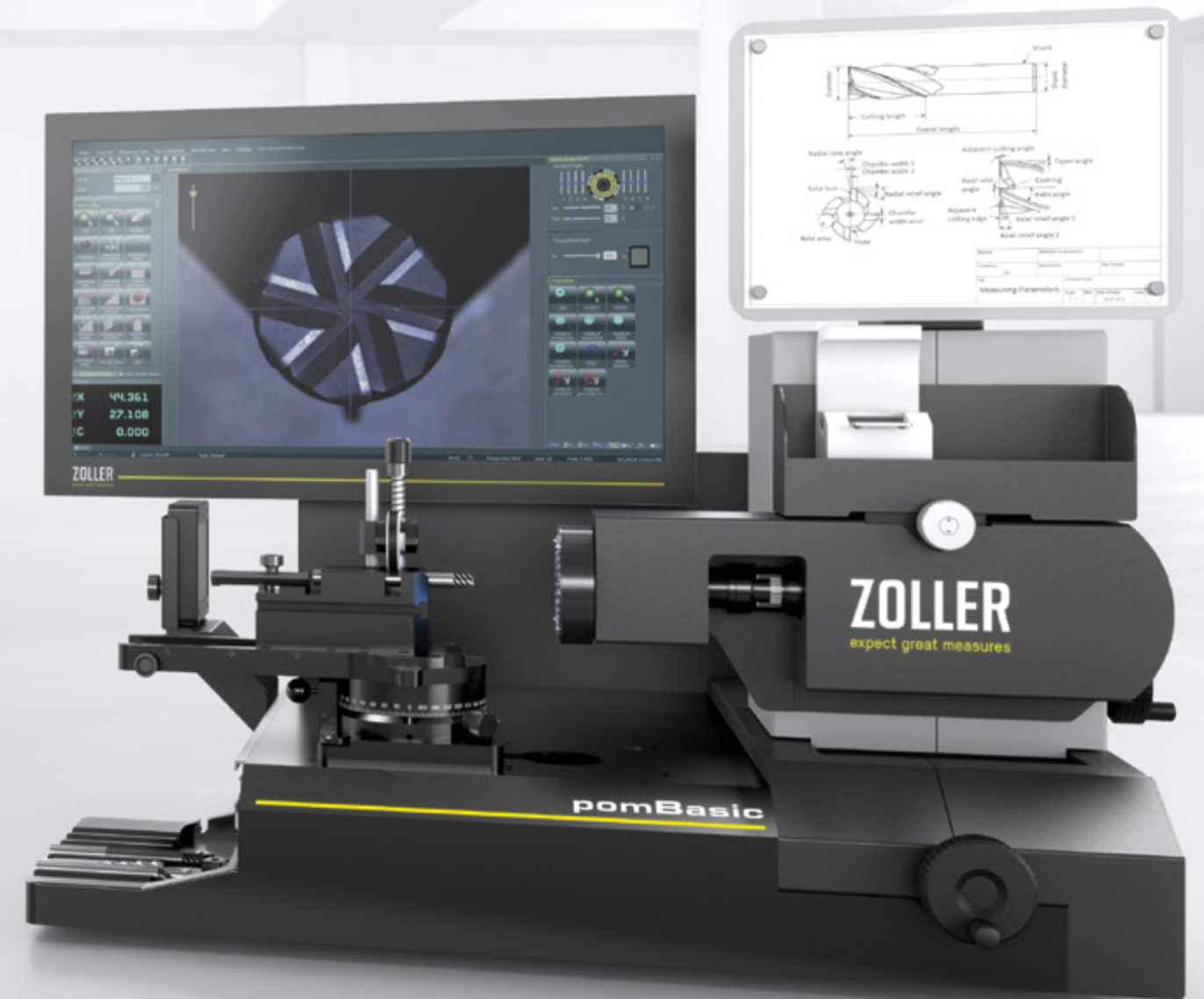
Certified safety



Tool Inspection – Well Thought Through

The ZOLLER »pomBasic« and »pomBasicMicro« impress with reliable measuring. Insert the tool, align it, check it and you're done. This is how you can inspect almost all shank tools easily and reliably. Automatic edge detection guarantees fast measurement with high accuracy.

Wizard-guided measuring sequences, seamless inspection reports at the touch of a button and the tool-specific management of all parameters in the z.One central ZOLLER tool database ensure efficient production processes and traceable quality at all times.



Certified
safety



Quality Management/Environmental Management
according to ISO 9001, VDA 6.4 and ISO 14001

»pomBasic«

We Stand for Passionated Precision

TECHNOLOGY

A ZOLLER »pomBasic« is simple, fast and safe to handle – three unbeatable characteristics that could not be more true. But its design also provides the basis for μm -precise measurements. Linear measuring axes, slides and the cable ducts, for example, are unique. The ZOLLER »pomBasic« guarantees quality and efficiency, making its use and precise measurements directly in your production indispensable.

Each »pomBasic« is a promise to our customers. Thanks to clever and process-oriented measuring, or POM for short, the »pomBasic« achieves proven precision. The manually operated inspection and measuring technology has high-quality components and an industry-compatible device design – ZOLLER compactness that impresses.

For us, doing the ZOLLER assembly, attention to detail and customer benefit go hand in hand: mechanics, stability and operation are always the focus of our production processes.

TOBIAS WONNER, TIM BIRKENFELDER

Part of the ZOLLER assembly team, ZOLLER assembly preparation

Innovative axis principle

Compact overall concept

Maximum operating comfort

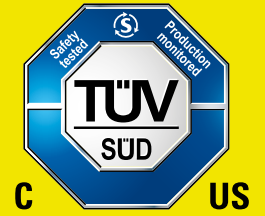


Compactness in Detail

»pomBasic« TÜV and UL/CSA Approved

Every »pomBasic« inspection device is certified according to international standard IEC/EN 61010-1 and cNRTLus.

Proven and certified safety.



Software »pomSoft« – is self-explanatory, clearly laid out and enables the operator to take reliable measurements. The 24" TFT color monitor impresses with its industry standard and its integration directly on the device.

Incident light camera with multi-LED segment illumination – has centered, dimmable illumination with automatic illumination control. The high-performance LEDs, segmented into eight areas, ensure optimal lighting of the surface for high precision.

Manual swivel table – enables universal use of the various tool holders. Equipped with 3 x 90° indexing, it can be variably adjusted ($\pm 120^\circ$ including Nonius) to check tools on the circumference and on the face. The swivel position is held precisely by clamping (index positions for $-90^\circ/0^\circ/+90^\circ$). To measure extra-long tools, an optional swivel table version for lengths up to 400 mm is available.

Tool/accessory board – made of solid and anodized aluminium with seven prisms for gentle storage of shank tools. The board also offers sufficient space for small parts and reversible cutting plates.

Board for mouse and keyboard – is a space-saving pull-out drawer that is ergonomically located on the lower table.

Additional illumination diffuser – enables transmitted light measurement in the circumferential area and allows external contours, step lengths, point angles and much more to be measured.

Color laser printer – for report and list printing has its place in the practical machine table.

Drawing holder – is ideal for attaching drawings in direct proximity of the measurement. The magnetic spherical joint allows flexible and optimal alignment for the operator. The drawings can be easily fixed and quickly changed using magnets.

Incident light camera with zoom optics – which can be adjusted manually or optionally by CNC and is available in monochrome or color, depending on the version.

Separate electronics unit – with professional electrical installation of high-quality components for maximum reliability and a long service life. The electronics unit also offers service-friendly maintenance access.

Manual fine adjustment of the X and Y axes – is easy to move and ideal for process-oriented tool measurement.

Accessory board – for holding up to two accessory options for the swivel table, such as a reflector or stop. So you always have your accessories on hand.

Device base with linear axes – for safe, fast and convenient measurement. The manual endless fine adjustment of the integrated X and Y axes with Uhing drives and the ergonomic arrangement of the fine adjustment handwheels via reversing gears ensure the unique operating comfort typical for ZOLLER.

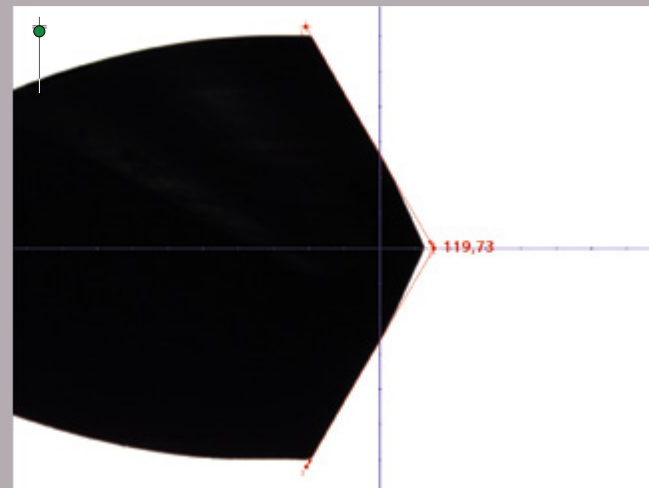
Additional illumination »pomLightTube« – the LED illumination tunnel ensures high-contrast lighting of the tool cutting edge in incident light. In addition, an optional 2-fold spotlight can be attached to perfectly illuminate concealed tool geometries.

Document and accessory board – in the machine table provides sufficient storage space and convenient access to your documents and accessories.

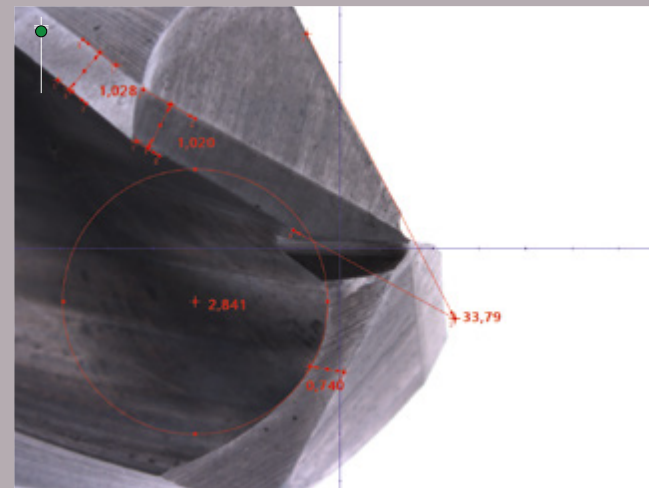
Stable machine table – can be individually selected as a seated or standing workstation and ensures the stable and secure positioning of your »pomBasic«.

Universal Optics for Inspection and Measuring

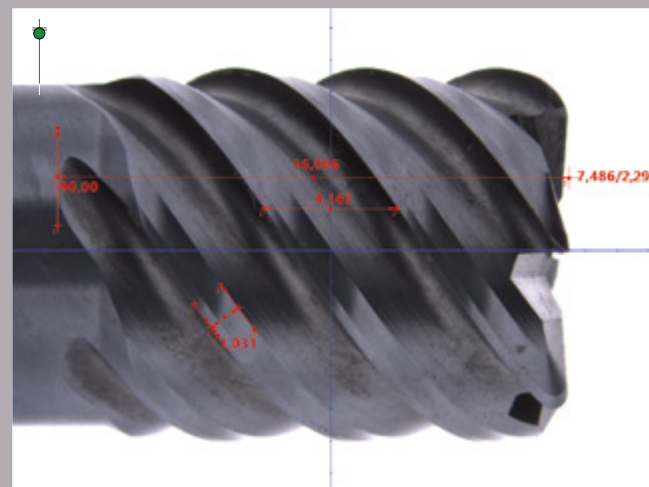
Whenever universal and targeted inspection of cutting tools is required, the ZOLLER »pomBasic« gives you precise results quickly and easily. Angles, radii, distances, cutting edge quality, grinding pattern – the »pomBasic« measures all relevant parameters in incident light of every type of cutting tool, including as drills, hob cutters, saw blades, forming tools and cutting inserts. The additional use of a diffuser (LED flat light) flexibly extends the range of applications for transmitted light measurements. External contours can also be quickly measured and documented.



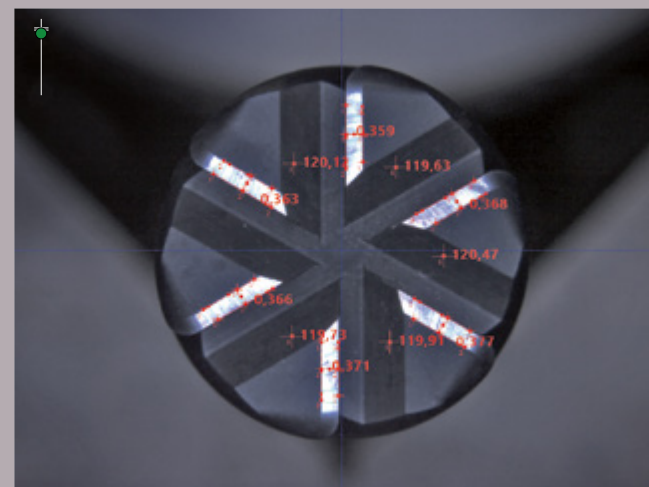
Transmitted light measurement on the circumference



Contour measurement in the »pomLightTube«



Incident light measurement on the circumference



Incident light measurement on the face



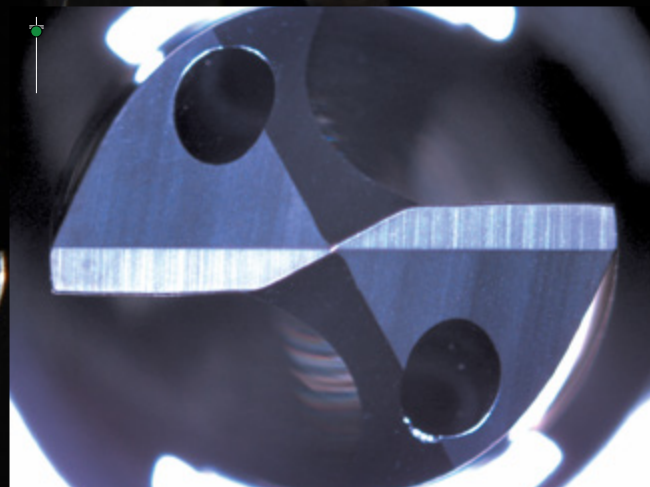
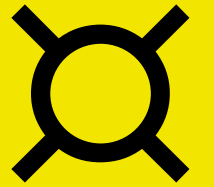
Sensors configuration	
Optics »pomBasic«	
»pomColorCam«, BF approx. 3.0 x 2.4 mm ² to approx. 20.8 x 16.6 mm ²	●
»pomColorCam«-MOT, BF approx. 3.0 x 2.4 mm ² to approx. 20.8 x 16.6 mm ²	⊙
Optics »pomBasicMicro«	
»pomMicroCam«, BF approx. 0.6 x 0.5 mm ² to approx. 7.9 x 6.3 mm ²	●

Tool Inspection in the Best Light

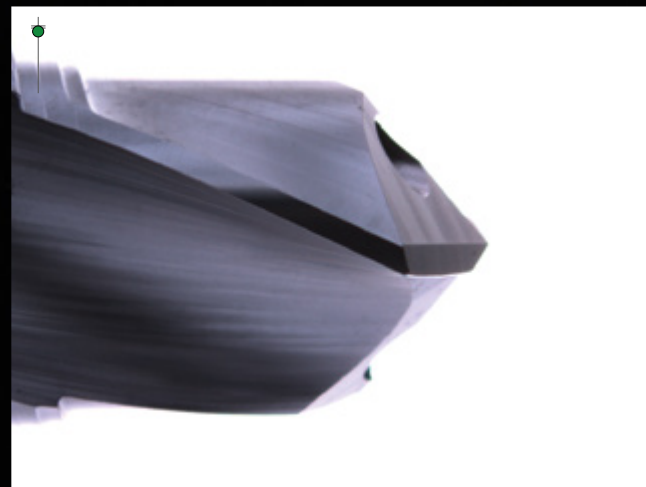
Optimum lighting of the complex geometries on precision tools is a precondition for perfect inspection and measurement. With the ZOLLER illumination »pomLightTube«, which is unique in its design, you can achieve phenomenally homogeneous image quality, even with geometries which are generally difficult to illuminate or with reflective surfaces.

Advantages of the »pomLightTube«

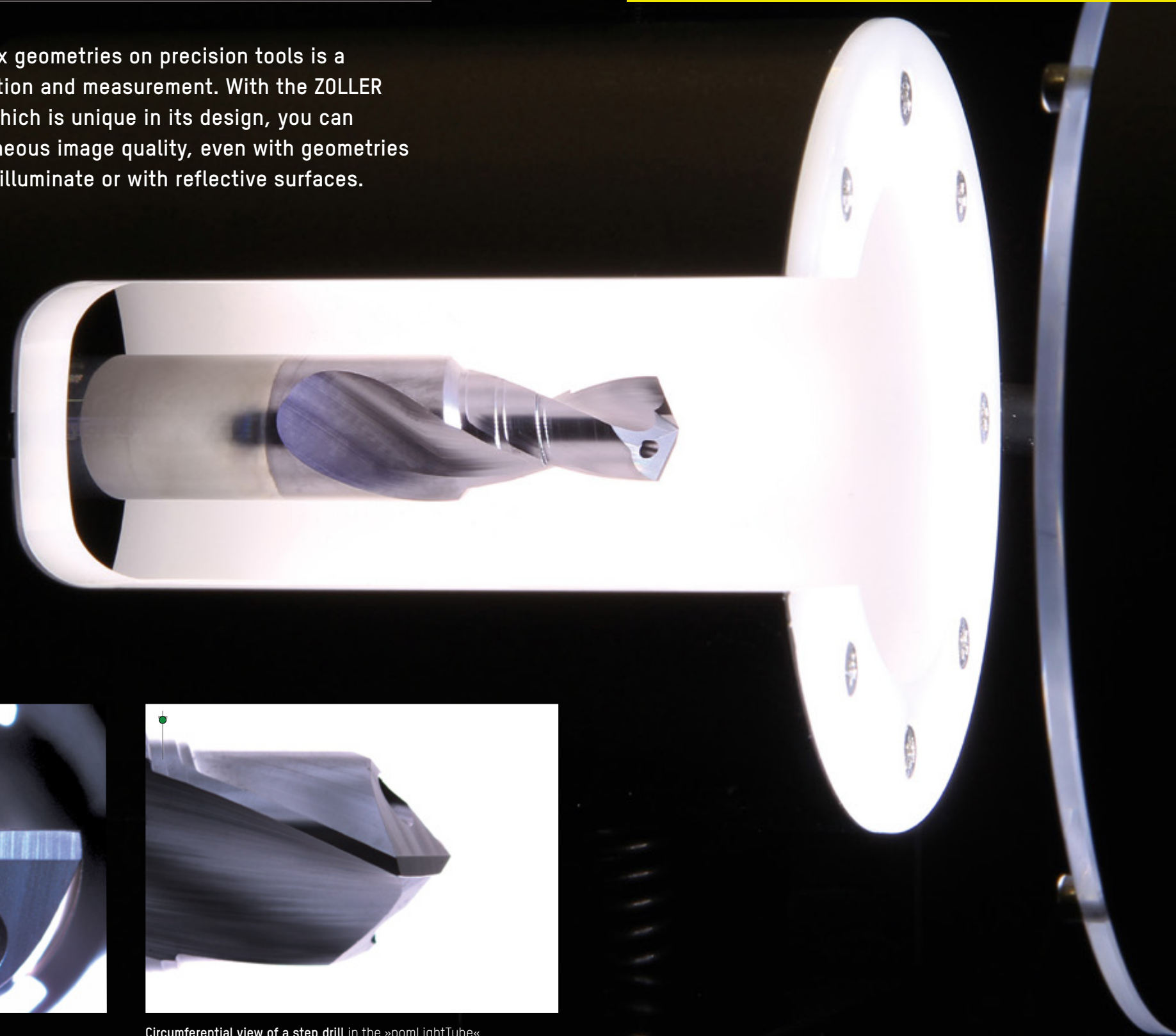
- High-contrast lighting of all types of surfaces
- Axial and radial incident light measurement without interruption
- No interference from partial spots



Frontal view of a step drill in the »pomLightTube«

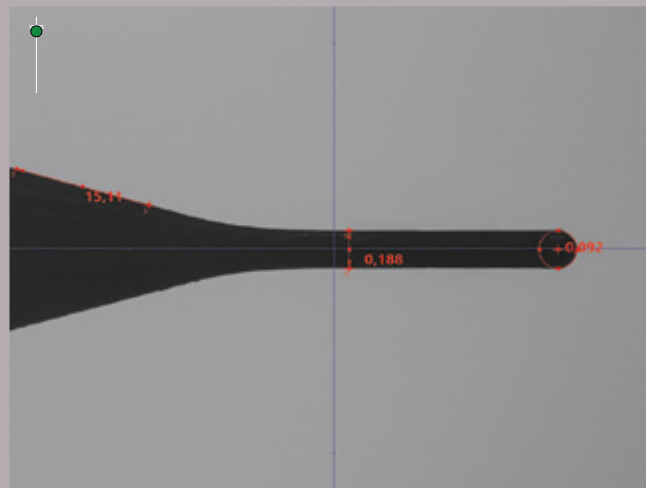


Circumferential view of a step drill in the »pomLightTube«

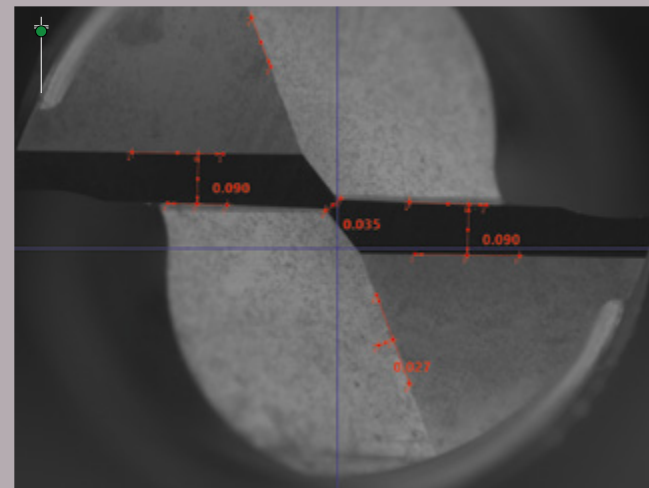


Highest Perfection with "Micro" Optics

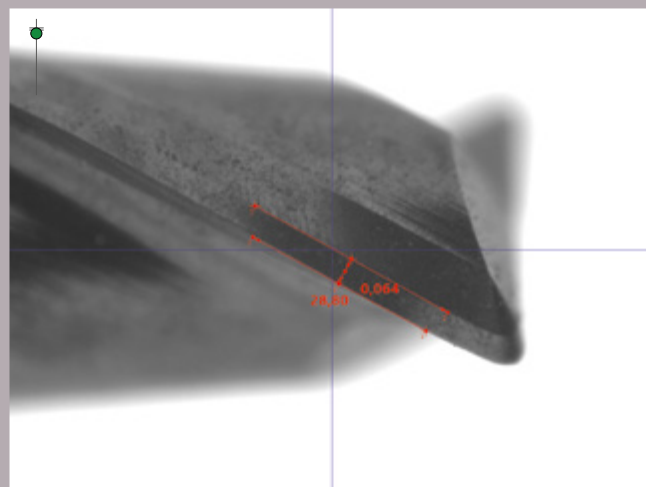
The ZOLLER »pomBasicMicro« is the compact and process-oriented inspection solution for inspecting and measuring micro tools. A special high-resolution micro camera enables the exact inspection of tools of the smallest size. The lens zoom with its magnification capacity of over 400x captures every micro tool in such detail that measurements can be carried out conveniently and with the highest precision. The »pomBasicMicro« can be used universally in the measuring room, in the goods receipt area or directly on the shop floor.



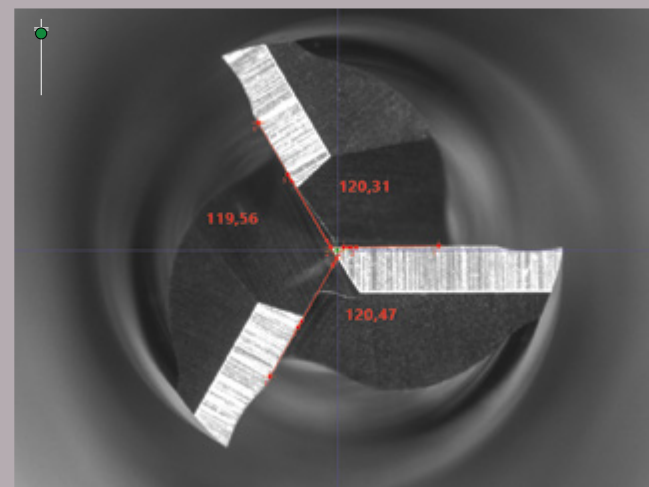
Transmitted light measurement on the circumference



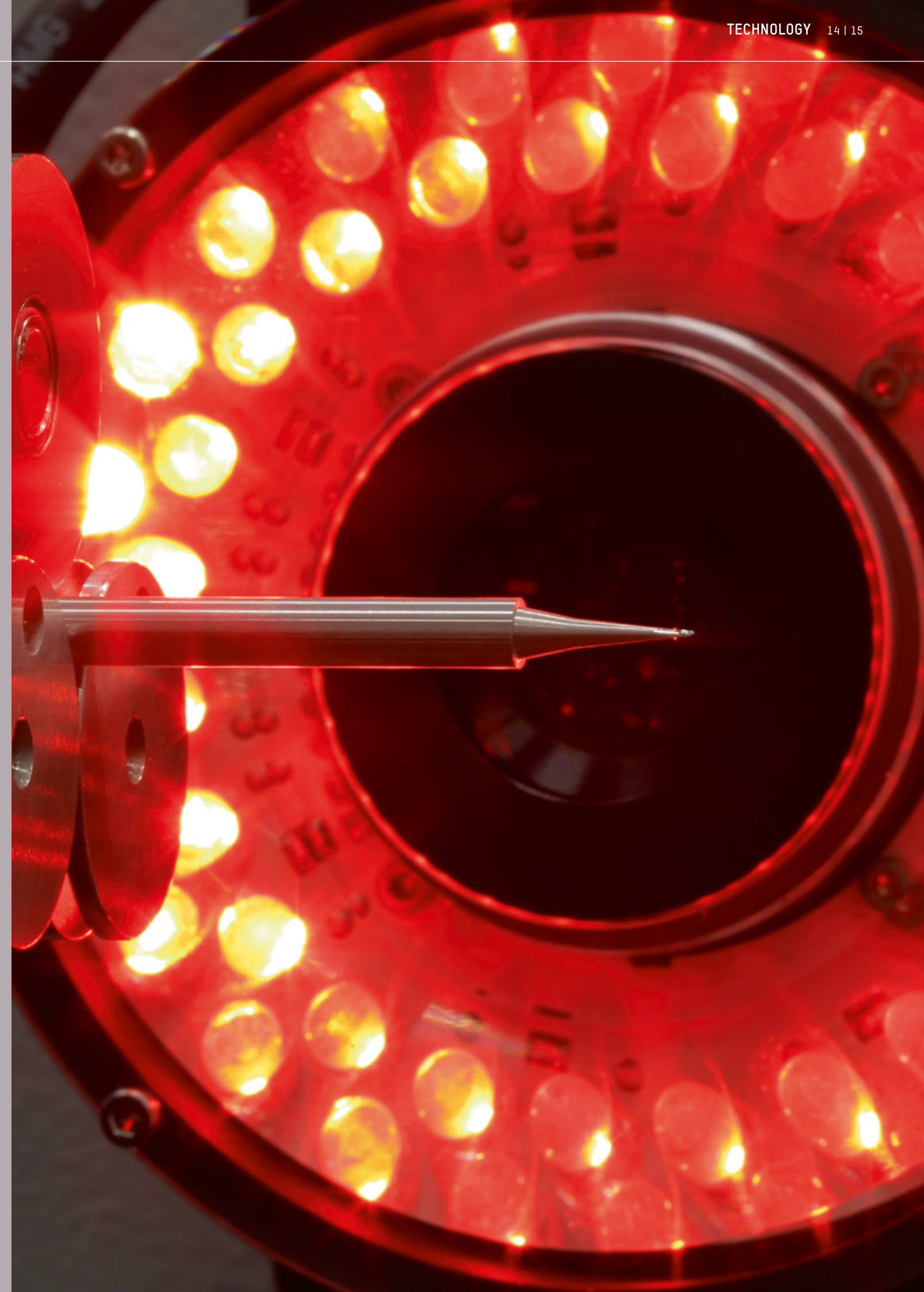
Contour measurement in the »pomLightTube«



Incident light measurement on the circumference



Incident light measurement on the face

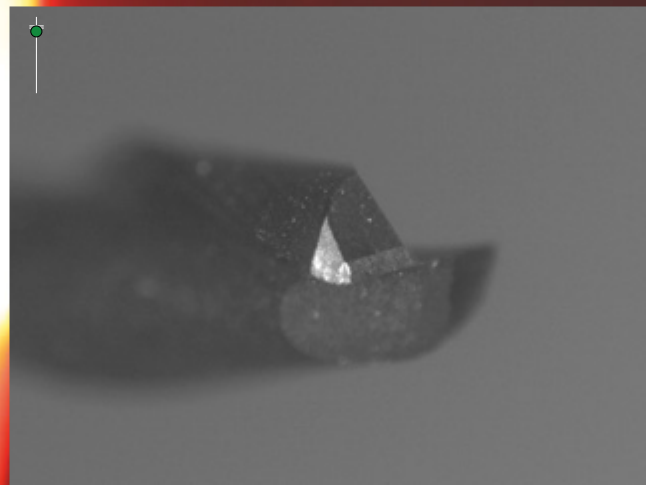
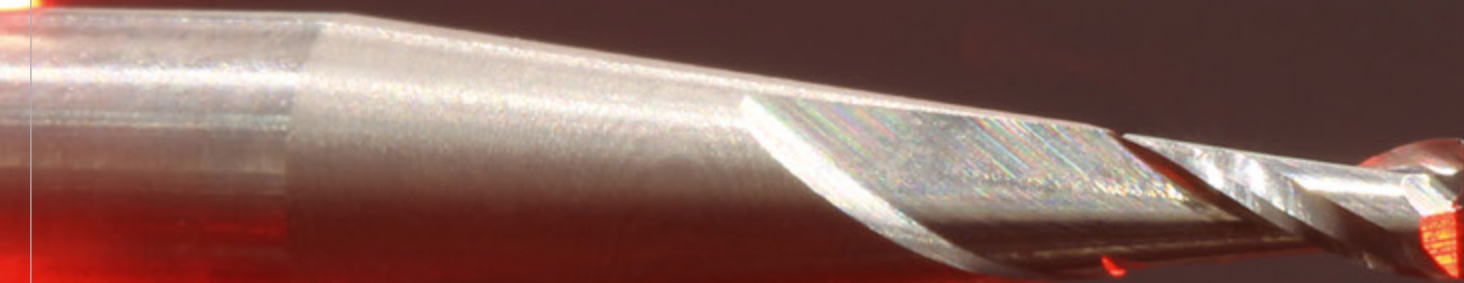
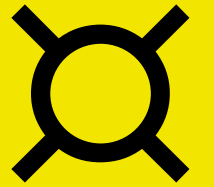


Micro Tools in the Focus of the "Micro"

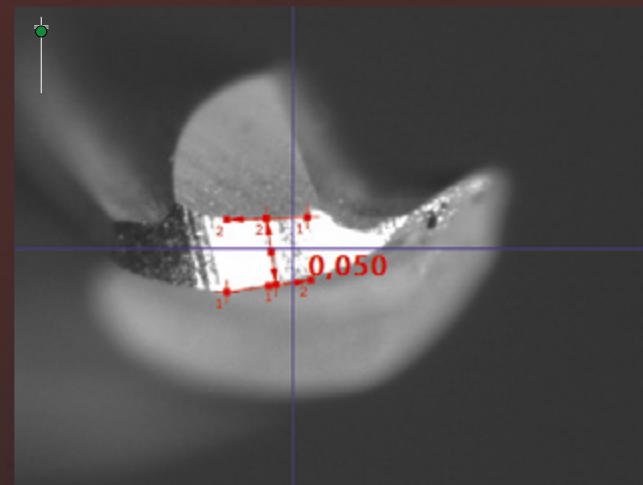
With the ZOLLER »pomBasicMicro«, you can inspect even the smallest detail with the utmost precision. We call this ZOLLER high-performance for consistent quality of your micro tools.

Advantages of ZOLLER inspection with the »pomBasicMicro«

- Inspecting the smallest tools with μm -precision
- Future-oriented measuring technology for your production
- Contactless measurements within seconds



Wear testing/inspection of surface coatings



Contour measurement/inspection on a full radius cutter D 0.2 mm

µm-Precise Tool Holding



Shank tools
D 2 mm to D 50 mm*



Babychuck collet adapter D 32 mm



Reversible cutting plate holder D 32 mm



Shank tools
D 3 mm to D 20 mm



Collet chucks NBC20
D 3 mm to D 20 mm



Tool holder »pomPrisma«, directly clampable shank: D 2 mm to D 50 mm**



Tool holder »pomRoll«, directly clampable shank: D 2 mm to D 40 mm



Tool holder »pomRoll«-RP lite, directly clampable shank: D 1 mm to D 20 mm, manual fine adjustment for tool rotation



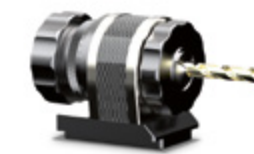
Tool holder small prism



Saw blade holder



Tool holder SK 50



Rotating collet chuck holder NBC20 for shank D 3 mm to D 20 mm



Tool-holding spindle HSK 63, manual clamping



Swivel table – with Nonius, clamping and indexing

Enables the universal use of the various »pomBasic« and »pomBasicMicro« tool holders. Equipped with 3 x 90° indexing, it can be variably adjusted ($\pm 120^\circ$ including Nonius) to check the tools on the circumference and on the face. The swivel position is held precisely by clamping (index positions for $-90^\circ/0^\circ/+90^\circ$). To measure extra-long tools, an optional swivel table version for lengths up to 400 mm is available.

*depending on the tool holder

**depending on the model variant

Advantages of the ZOLLER swivel table

- Tool holders are changed ergonomically and quickly
- Simple alignment and positioning
- Stable construction for exact measuring processes

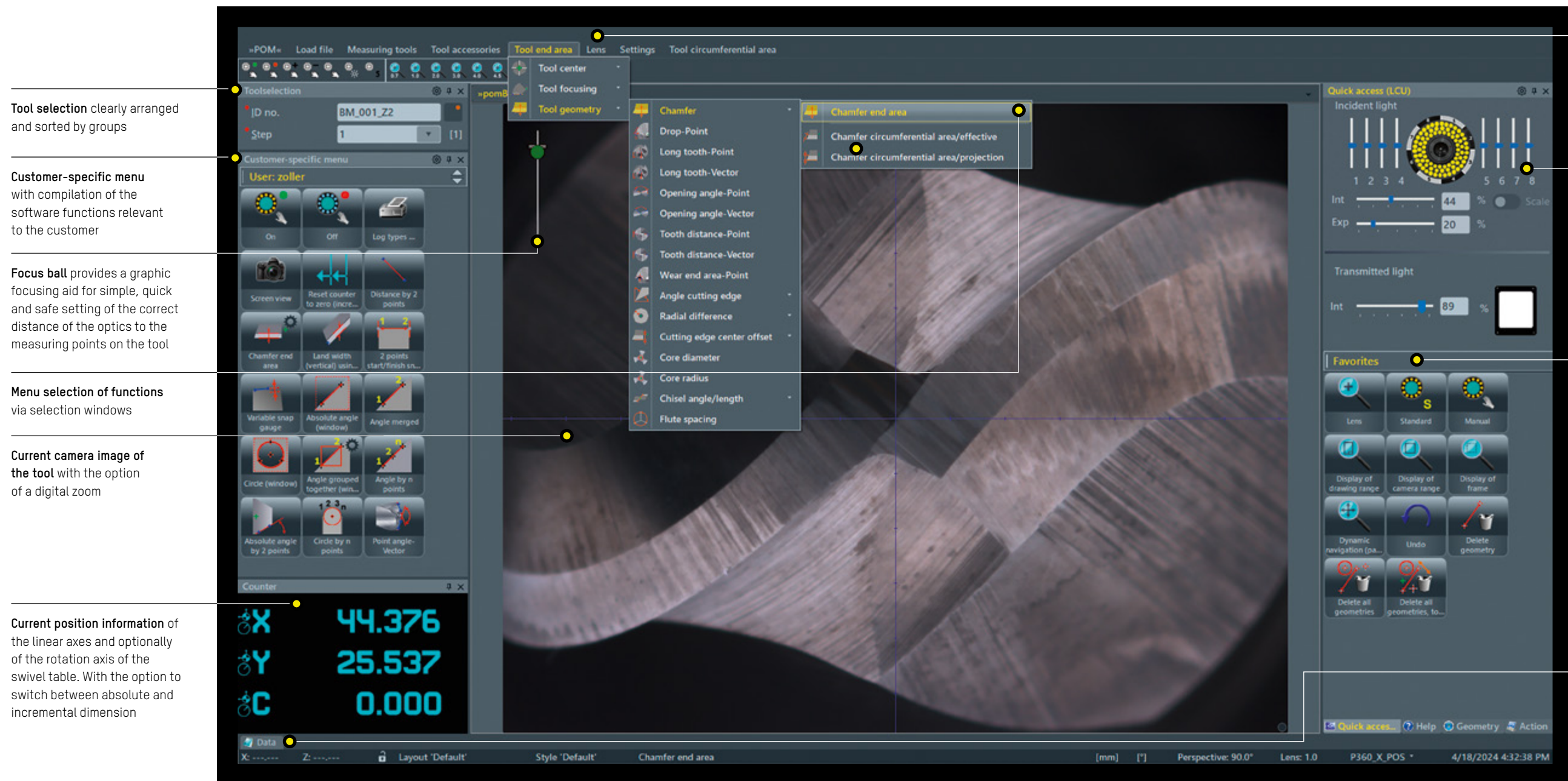


Rotation sensor (ROD) – for angle display swivel table in »pilot 4.0«

Can be optionally integrated into the swivel table. The angle is displayed digitally in counter mode (C-axis). The digital display ensures, for example, fast positioning of the swivel table to the nominal angle in the »pomSoft« image processing technology.

Software »pomSoft« – Intelligent Inspection

The special »pomSoft« ZOLLER software for process-oriented measurement is based on the globally proven ZOLLER »pilot 4.0« image processing technology and is equipped with numerous evaluation algorithms for grinding and sharpening shops, as well as tool manufacturers. In addition, all functions can be individually created and saved for the respective inspection task and tool variant in the customer-specific menu. This means that it can be used clearly and user-independently without the need for extensive training.



Tool selection clearly arranged and sorted by groups

Customer-specific menu with compilation of the software functions relevant to the customer

Focus ball provides a graphic focusing aid for simple, quick and safe setting of the correct distance of the optics to the measuring points on the tool

Menu selection of functions via selection windows

Current camera image of the tool with the option of a digital zoom

Current position information of the linear axes and optionally of the rotation axis of the swivel table. With the option to switch between absolute and incremental dimension

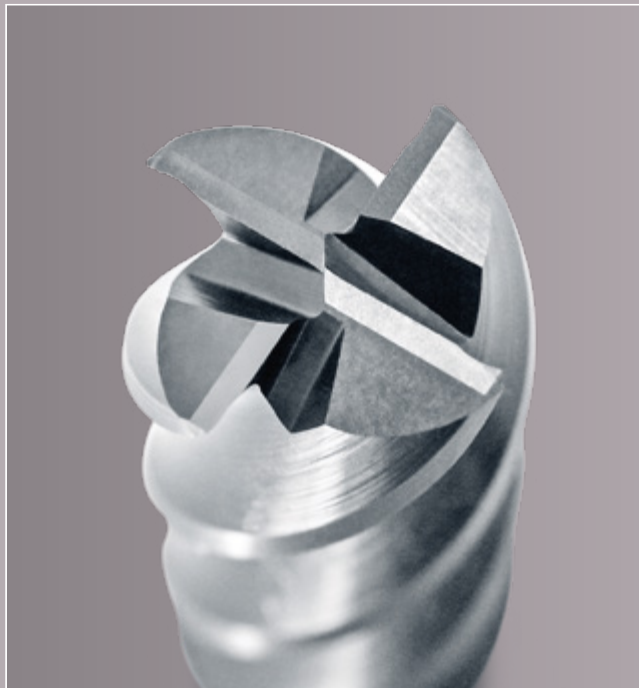
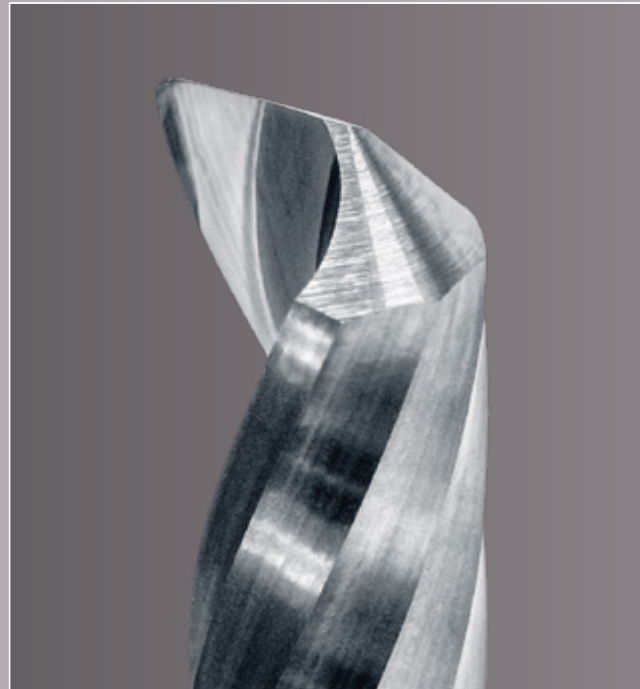
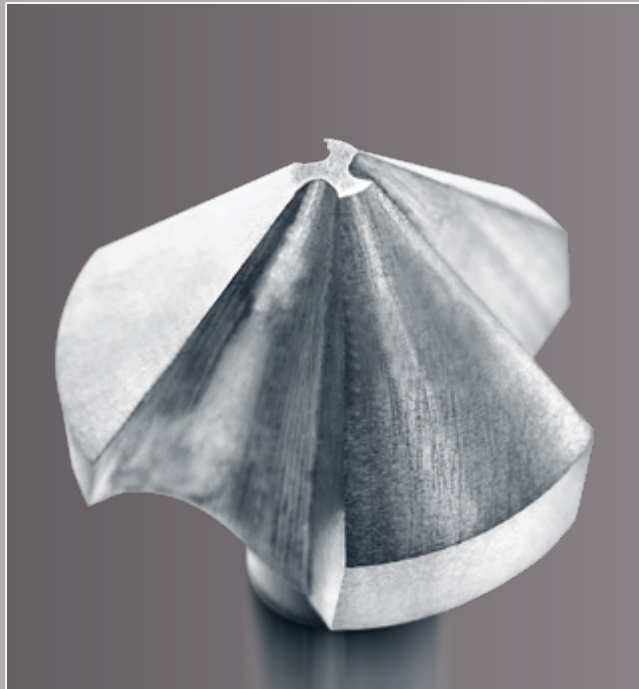
Selection of the zoom level which is set and permanently calibrated on the optics for consistently exact measurement results. With motorized zoom, the optics adjustment is automatic at the touch of a button

Quick access illumination control LCU (Light Control Unit) for optimal lighting of the tool

Favorites for quick access to the most frequently used functions

Data of the determined measurement results can be displayed. Including editing function, assignment of nominal value and tolerance as well as the option of data-transfer into the »apus« inspection report

Check and Document Parameters Precisely



Parameters at a glance:

- Outer contour
- Axial/center angle
- Diameter
- Corner radius
- Chamfer width
- Chamfer width face
- Chamfer width circumference
- Chamfer length
- Chamfer angle
- Radial relief angle face
- Radial relief angle circumference
- Hollow angle
- Core diameter
- Cone angle
- Long tooth
- Center offset
- Flute depth
- Run-out
- Chisel edge length
- Chisel edge angle
- Radius
- Concentricity
- Cutting edge length
- K-Land chamfer width
- Helix angle
- Point angle
- Step diameter
- Step length
- Taper
- Wear chest
- Wear front
- Wear circumference
- Tool length



»POM« - measurement results and camera image 1 / 1

»pomBasic« 3/5/2024 ZOLLER
User zoller 8:46:30AM

ID no. EM_01_Z2_D12
Desc. End mill D 8 mm
Remark
Tester

Title	Actual value	Nominal value	Lower tol.	Upper tol.
Chamfer Front	0.664	0.650	-0.050	0.050
Tip Angle	118.08	118.00	-0.50	0.50
Core Diameter	2.373	2.400	-0.050	0.050
Chisel Length	0.123	0.100	-0.050	0.050
Chamfer Circumference	0.523	0.500	-0.050	0.050
Helix Angle	25.23	25.00	-1.00	1.00
Axial Relief Angle 1	17.46	18.00	-1.00	1.00
Axial Relief Angle 2	22.04	22.00	-1.00	1.00

Documentation – of your measurements as a clearly laid out inspection report with the option of output to your list printer or as PDF file

»POM« - measurement results and camera image 1 / 1

»pomBasic« 3/5/2024 ZOLLER
User zoller 8:46:30AM

ID no. EM_01_Z2_D12
Desc. End mill D 8 mm
Remark
Tester

Title	Ist-Wert	Soll-Wert	Untere Tol.	Obere Tol.
Chamfer Width Face	0.548	0.550	-0.050	0.050
Chamfer Width Face	0.539	0.550	-0.050	0.050

Inspection report – with large display of the cutting edge as an additional option for your documentation

Automatic Inspection with the Macro Function

Do you have repetitive measuring tasks and want to carry them out effectively? ZOLLER has the perfect solution. Thanks to the macro function, repeat measurements can be saved easily and reliably. A reference image serves as a template. As soon as the tool is positioned congruently with the template, a single press of a button is all it takes to start the automatic measuring process, regardless of the operator. We call this intelligent ZOLLER comfort.

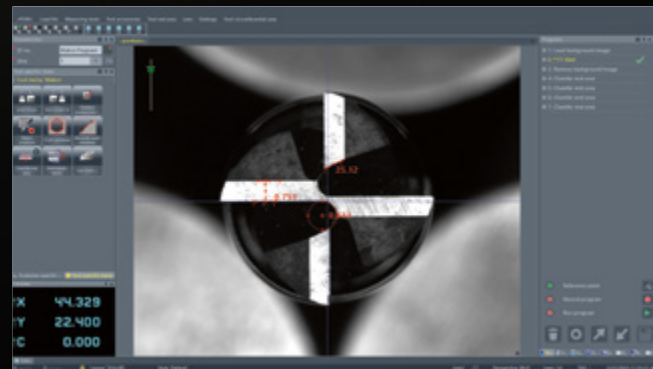
A single click on your saved macro program is all it takes and the measuring process runs automatically: simple, fast and user-friendly.



Save tool as digital reference image



Position the tool to be measured in relation to the reference image



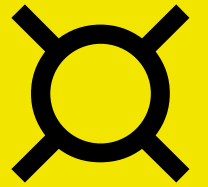
Start the automatic measuring process in the macro program



Overview of measurement results and tolerances

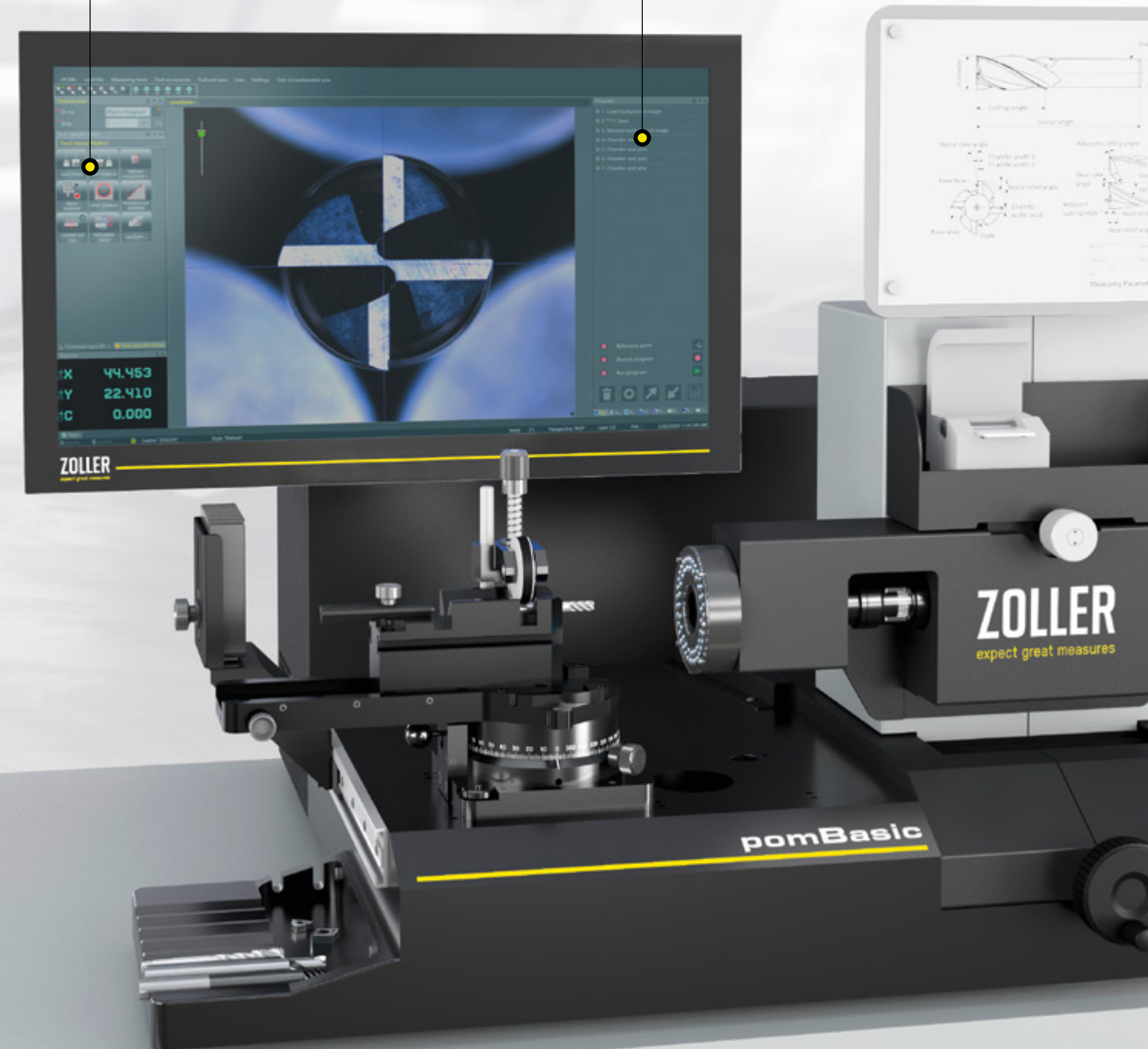
Advantages of the ZOLLER macro function

- Repeated measuring tasks with just one mouse click
- Fully automatic measuring process up to the report
- Operation for all your employees without the need for training



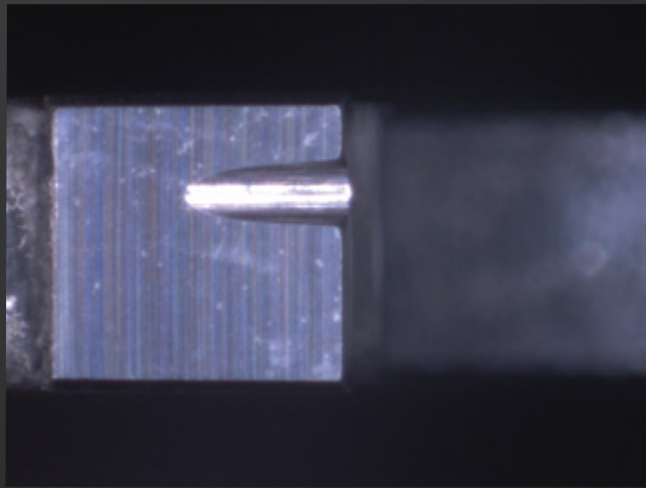
Selection of the measuring functions to create an automatic macro program

Display of your currently loaded macro program for quick program start

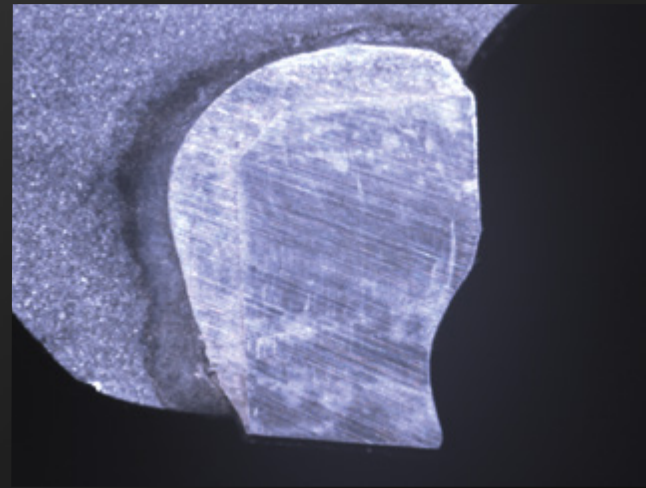


Measuring Saw Blades Tooth by Tooth

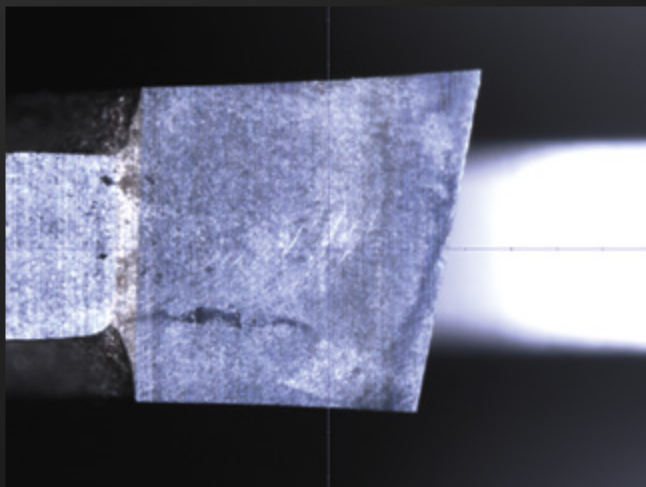
The saw blade holder extends the range of applications of the »pomBasic«. It can be used to clamp saw blades with a diameter of 150 mm to 600 mm with corresponding reducer rings. With »pomSoft« image processing technology, a variety of parameters and geometries on the teeth of the saw blades can be determined axially and radially in incident light.



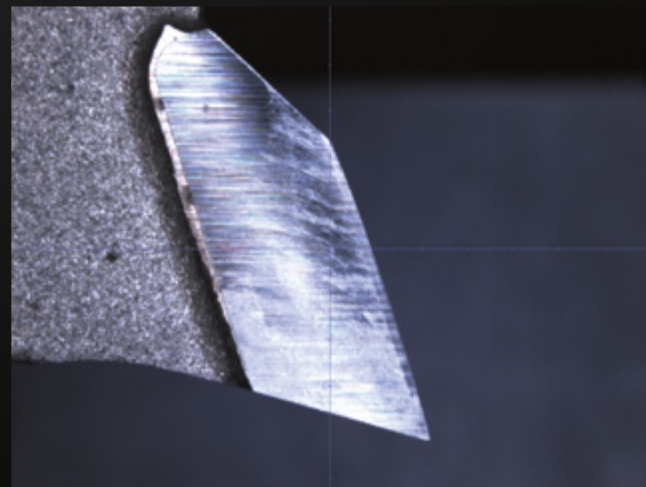
Radial view of saw blade tooth with flute



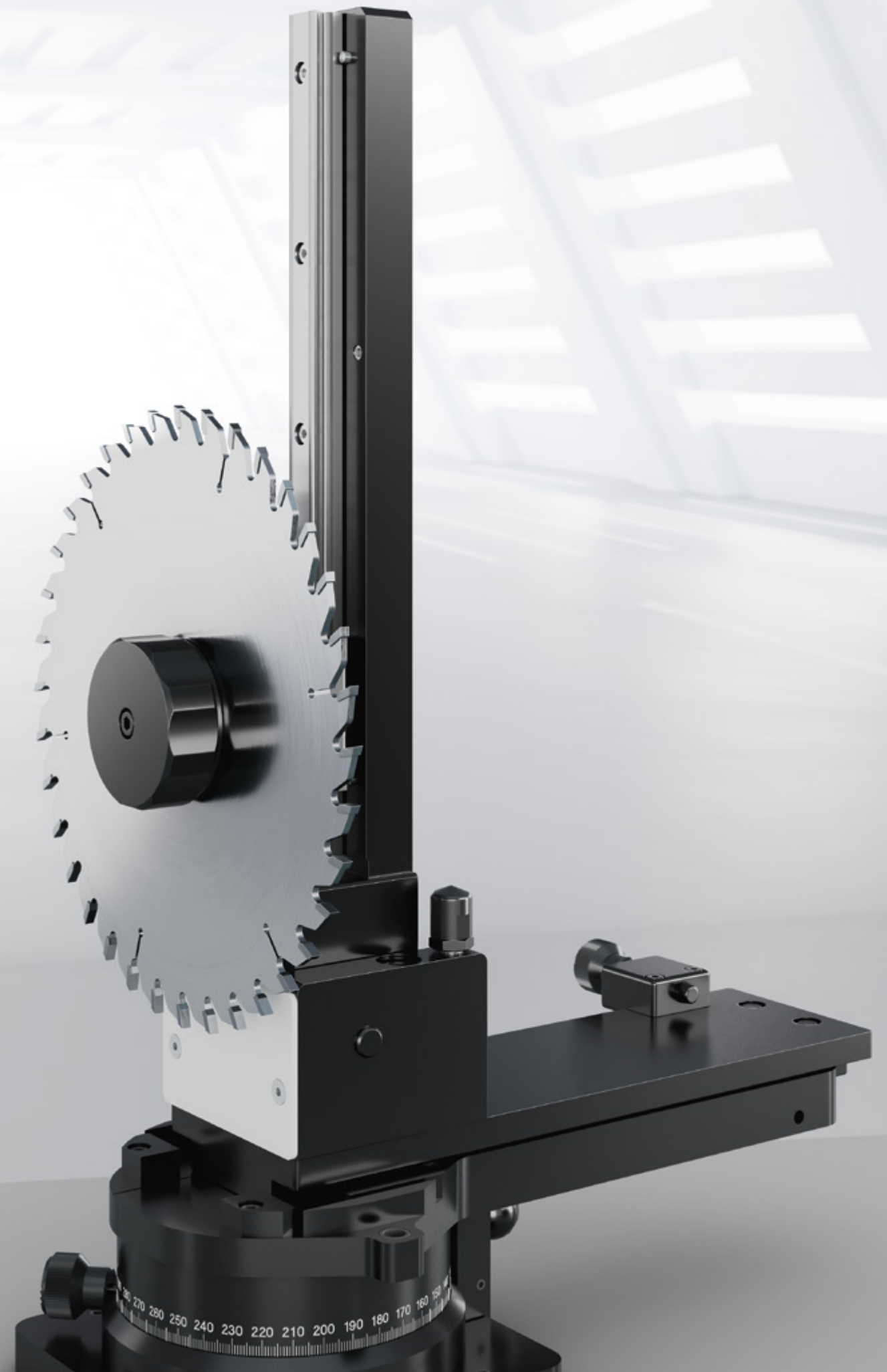
Axial view of saw blade tooth with flute step



Radial view of saw blade tooth to control cutting edge and soldering



Axial view of saw blade tooth to control cutting edge and soldering



Options/Accessories

Machine table standing workstation

Stable and safe positioning of the »pomBasic« and »pomBasicMicro« inspection machines as a standing workstation. Includes pull-out board for mouse and keyboard.



Machine table seated workstation

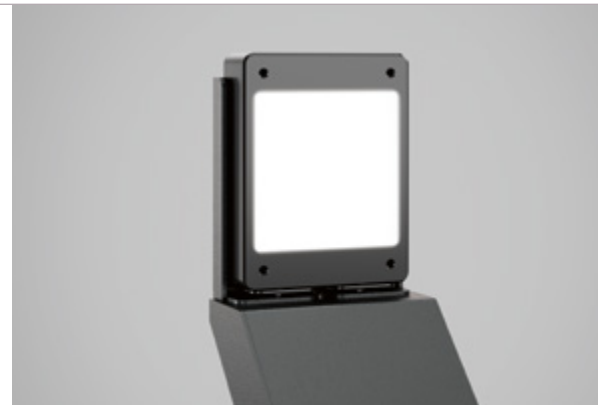
Stable and secure positioning of the »pomBasic« and »pomBasicMicro« inspection machines as a seated workstation for optimum comfort, even on time-consuming inspection tasks. Includes pull-out board for mouse and keyboard.



Diffuser (white/red)

The diffuser (LED flat light) enables transmitted light measurement in the circumferential area. For this purpose, the diffuser is positioned opposite the video microscope system. This means that outer contours, step lengths, point angles and much more can be measured.

Diffuser white for »pomBasic«
Diffuser red for »pomBasicMicro«



»pomLightTube« (white/red)

Additional illumination adjustable in height for optimum, high-contrast lighting of even the smallest areas along the tool cutting edge – for radial and axial incident light measurements.

»pomLightTube« white for »pomBasic«
»pomLightTube« red for »pomBasicMicro«



2-fold LED spot illumination (white/red)

The dimmable additional illumination consisting of two LED spots can be flexibly positioned in relation to the tool to provide optimum lighting even for undercut tool geometries.

LED spots white for »pomBasic«
LED spots red for »pomBasicMicro«



Drawing holder

Ideal for attaching drawings in direct proximity of the measurement. The magnetic spherical joint allows flexible and optimum alignment for the operator. The drawings can be easily fixed and quickly changed using magnets.



Tool/accessory board

The tray on the left of the inspection device allows tools with a maximum shaft diameter of D 50 mm to be stored carefully. The board also offers sufficient space for small parts and reversible cutting plates.



Options/Accessories

Extended swivel table

For extra-long tools such as drills or reamers, the extended swivel table enables perfect tool fixing.



Extended holder for deep hole drills

Support for extra-long tools D 3 mm to D 20 mm up to a length of 1000 mm. The support height of the prism can be adjusted. The connection to the extended swivel table is mechanical.



Calibration gauge

The calibration gauge for the »pomSoft« image processing technology is used to correct the distortion of the optics and to determine the absolute accuracy of the zoom levels. The calibration gauges can be mounted directly on the swivel table.



Motor zoom

The zoom level is selected in the software at the click of a mouse and automatically adjusted by motor, making measuring processes even more reliable and comfortable.



Color laser printer

For report printouts directly on the inspection machine.



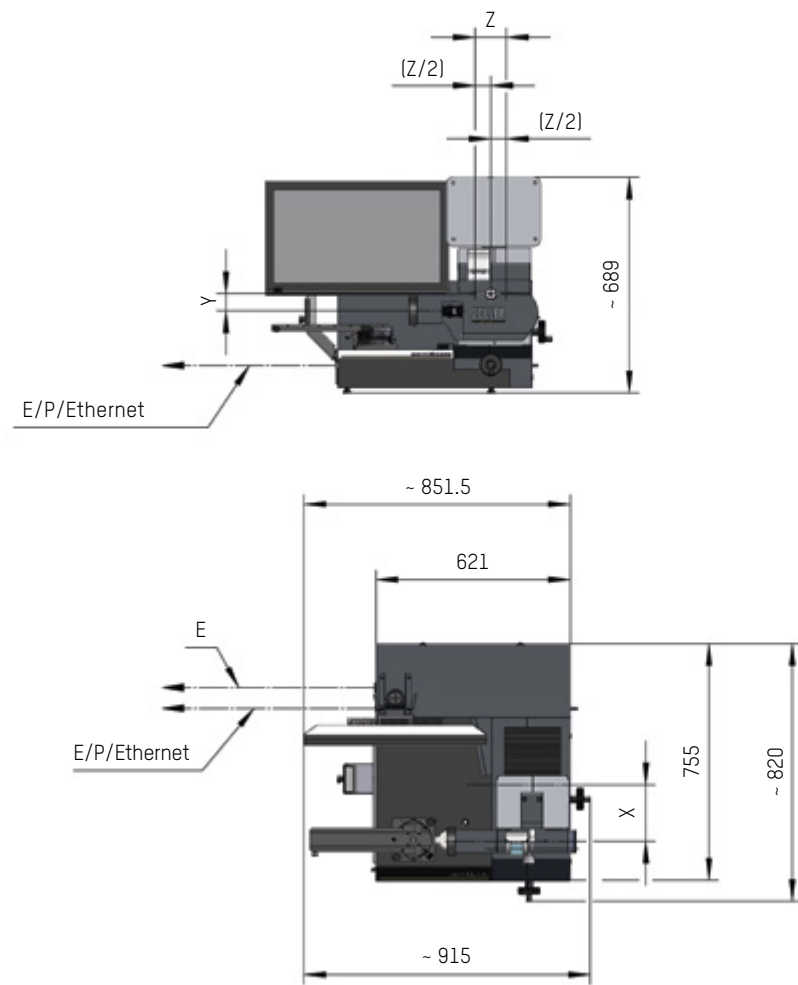
UPS system

The UPS system for uninterruptible power supply ensures that your computer is shut down properly in the case of a power failure to prevent data loss. Mains voltages of 230 V~ (Europe) and 120 V~ (USA) are available.

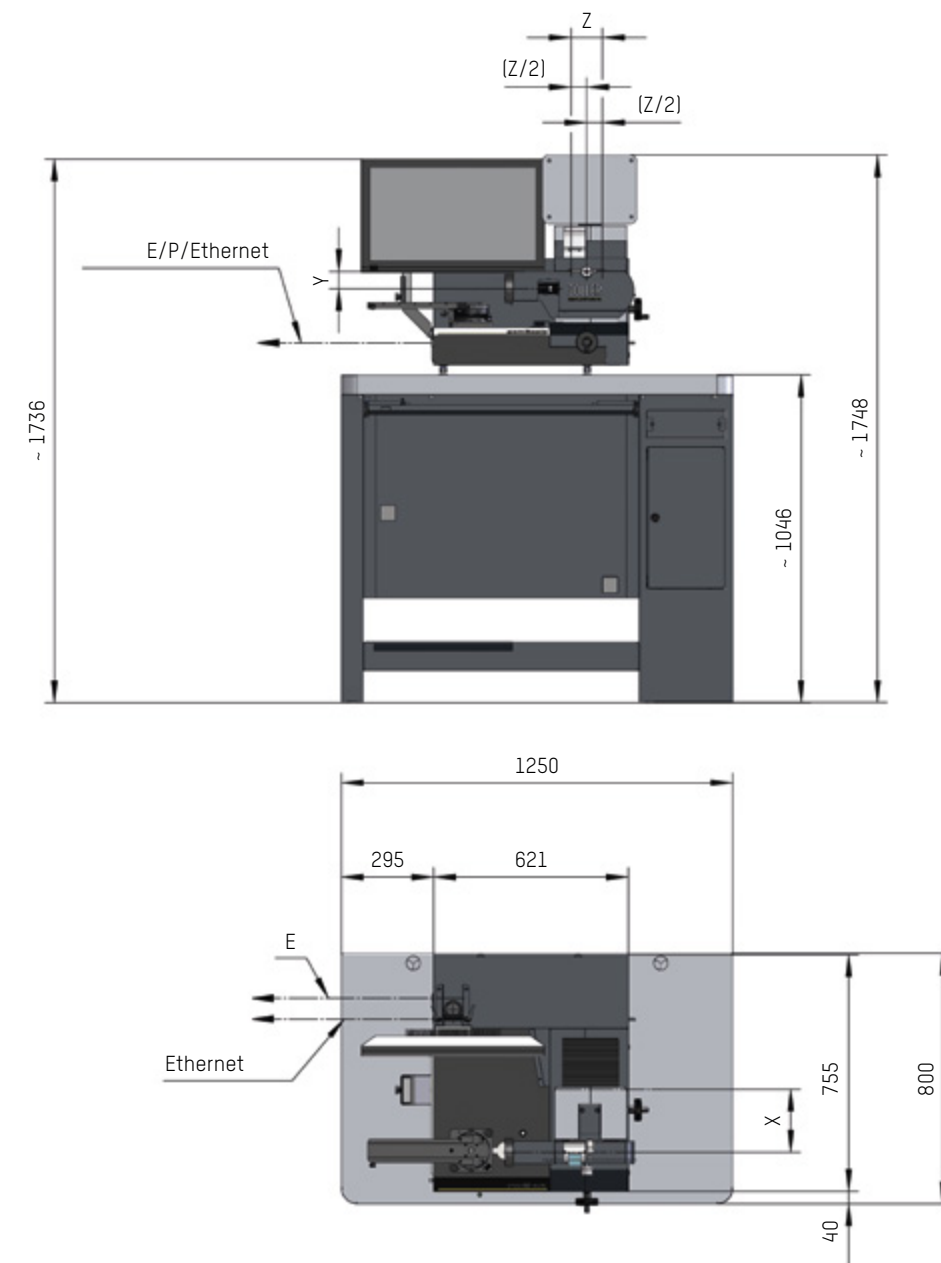


Installation Dimensions and Technical Data

Technical data »pomBasic« S »pomBasicMicro« – Table version

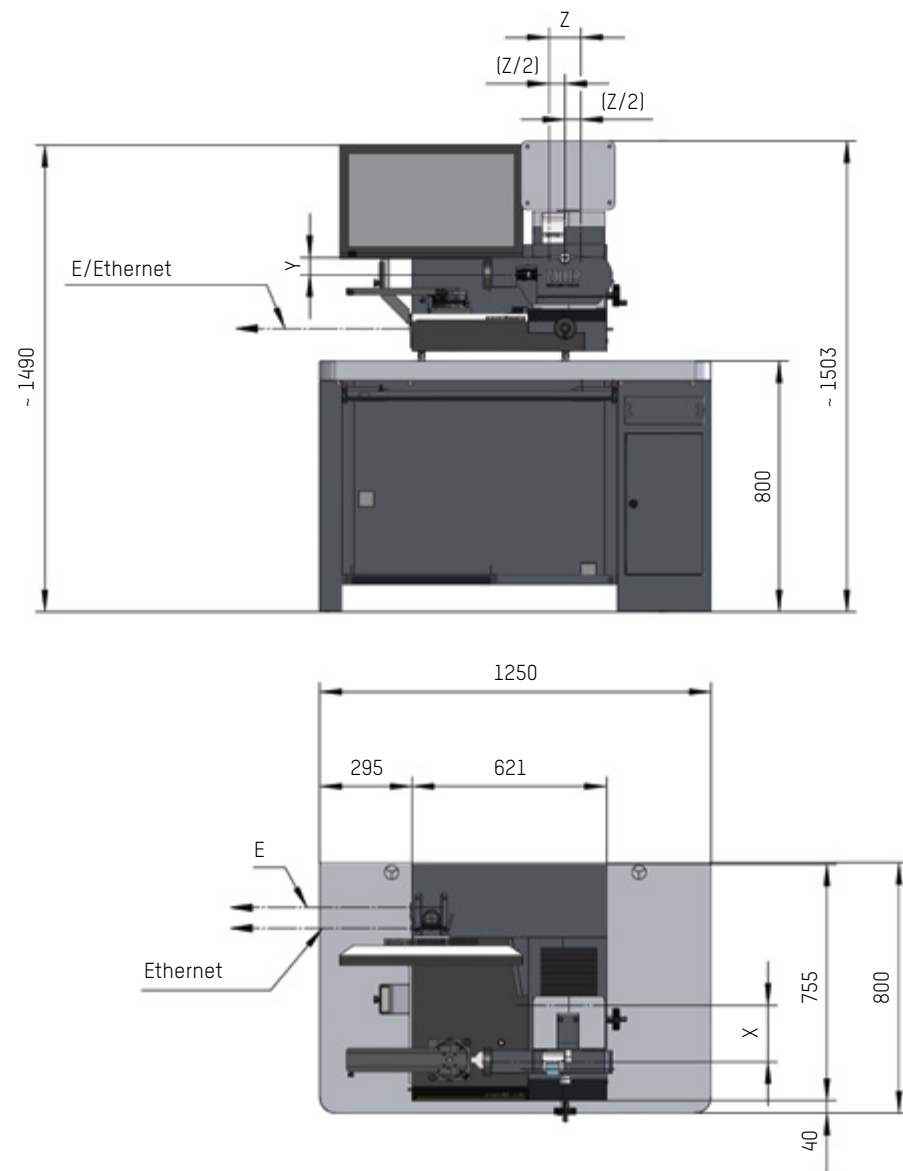


Technical data »pomBasic« S »pomBasicMicro« – Standing workstation



Installation Dimensions and Technical Data

Technical data »pomBasic« & »pomBasicMicro« – Seated workstation



	»pomBasic«	»pomBasicMicro«
Axes		
Swivel table standard	●	●
Swivel table extended	⊙	⊙
Indexing -90°/0°/+90°	●	●
Manual clamping	●	●
Nonius angle display swivel table	●	●
ROD encoder angle display swivel table	⊙	⊙
Manual endless fine adjustment X/Y	●	●
Manual camera axis	●	●
Electronics		
»pilot 4.0« 24" TFT color monitor	●	●
Device equipment		
Workbench version	●	●
Machine table standing workstation	⊙	⊙
Machine table seated workstation	⊙	⊙
Camera/sensors		
»pomColorCam«, BF approx. 3.0 x 2.4 mm ² to approx. 20.8 x 16.6 mm ²	●	-
»pomColorCam«-MOT, BF approx. 3.0 x 2.4 mm ² to approx. 20.8 x 16.6 mm ²	⊙	-
»pomMicroCam«, BF approx. 0.6 x 0.5 mm ² to approx. 7.9 x 6.3 mm ²	-	●
8-fold LED incident light white	●	-
8-fold LED incident light red	-	●
Diffuser white	⊙	-
Diffuser red	-	⊙
Technical data		
Travel range X-axis	180 mm	180 mm
Travel range Y-axis	55 mm	55 mm
Travel range Z-axis (camera)	± 50 mm	± 50 mm
Clampable shaft diameter	0,5 mm to 50 mm (depending on tool holder)	0,5 mm to 50 mm (depending on tool holder)
Zoom lens	Video microscope system color with 6.5x optical zoom	Video microscope system monochrome with 12x optical zoom
Working distance	90 mm	50 mm

Pioneering Efficiency for your Grinding Shop

The highest potential for greater efficiency lies outside the grinding machine: ZOLLER Solutions stand for your future – we make you more successful. If you can manufacture your parts faster and more efficiently, you can work more economically and invest in the future. If economic progress is your goal, then ZOLLER is your partner.



Made in Germany – Available Wherever You Are

Your Advantage
ZOLLER presence
Global. Close. Personal.

ZOLLER quality is “made in Germany” and there for you, anywhere in the world.

Our company has its own locations and branches at 85 sites in 62 countries, guaranteeing we are close to customers and can provide first-class, personal customer service in local markets.

- Parent company
- Headquarters
- Branch office
- Representative

GERMANY

HEADQUARTERS

E. ZOLLER GmbH & Co. KG
Einstell- und Messgeräte
Gottlieb-Daimler-Straße 19
D-74385 Pleidelsheim
Tel: +49 7144 8970-0
Fax: +49 7144 8970-70191
post@zoller.info | www.zoller.info

ZOLLER NORTH

E. ZOLLER GmbH & Co. KG
Service- und Vertriebszentrum
D-30179 Hannover

ZOLLER EAST

E. ZOLLER GmbH & Co. KG
Service- und Vertriebszentrum
D-04158 Leipzig

ZOLLER WEST

E. ZOLLER GmbH & Co. KG
Service- und Vertriebszentrum
D-40764 Langenfeld

EUROPE

AUSTRIA

ZOLLER Austria GmbH
A-4910 Ried im Innkreis
office@zoller-a.at | www.zoller-a.at

SWITZERLAND

ZOLLER Schweiz GmbH
CH-9016 St. Gallen
info@zoller-ch.com | www.zoller-ch.com

FRANCE

ZOLLER France
F-67380 Lingolsheim
info@zoller.fr | www.zoller.fr

SPAIN + PORTUGAL

ZOLLER Ibérica S.L.
E-08005 Barcelona
correo@zoller.info | www.zoller.info

SWEDEN

ZOLLER Sweden AB
SE-63221 Eskilstuna
info@zoller-se.com | www.zoller.info

TURKEY

ZOLLER Ölçüm Teknolojileri San.ve Tic. Ltd. Sti.
TR-16120 Nilüfer / Bursa
info@zoller-tr.com | www.zoller-tr.com

RUSSIA

LLC ZOLLER Russia
RU-111123 Moscow, Russia
info@zoller-ru.com | www.zoller-ru.com

ISRAEL

ZOLLER Israel GmbH
Ramat Yishay 3009500
info@zoller-il.com | www.zoller.info

POLAND

ZOLLER Polska Sp. z o.o.
63-100 Śrem
biuro@zoller-a.at | www.zoller.net.pl

CZECH REPUBLIC + SLOVAKIA

ZOLLER Czech s.r.o.
602 02 Brno
info@zoller.cz | www.zoller.cz

AMERICA

USA

ZOLLER Inc.
North American Headquarters
USA-48108 Ann Arbor, MI
sales@zoller-usa.com | www.zoller.info/us

ZOLLER Inc. Pacific

USA-90503 Torrance, CA
sales@zoller-usa.com | www.zoller.info/us

CANADA

ZOLLER Canada Inc.
CAN-LSN 864 Mississauga, ON
sales@zoller-canada.com | www.zoller.info/ca

MEXICO

ZOLLER Tecnologias S de R.L. de C.V.
MEX-C.P. 76030 San Angel Querétaro
sales@zoller-mexico.com | www.zoller.info/mx

BRAZIL

ZOLLER do Brasil
BRA-CEP 13284-198 Nova Vinhedo,
Vinhedo - São Paulo
comercial@zoller-br.com | www.zoller-br.com

ASIA

INDIA

ZOLLER India Private Ltd.
IN-Pune 411019 Maharashtra, India
info@zoller-in.com | www.zoller-in.com

CHINA

ZOLLER Shanghai, Ltd.
Asia Pacific Regional Headquarter
RC-201108 Shanghai
info@zoller-cn.com | www.zoller-cn.com

ZOLLER Asia Pacific, Ltd.

RC-Kowloon, Hongkong
info@zoller-cn.com | www.zoller-cn.com

JAPAN

ZOLLER Japan K. K.
JP-564-0037 Osaka, Japan
info@zoller-jp.com | www.zoller-jp.com

THAILAND

ZOLLER (Thailand) Co. Ltd.
Amphur Muang Chonburi, TH-20000 Thailand
info@zoller-in.com | www.zoller-th.com

INDONESIA

ZOLLER Singapore Pte. Ltd
Indonesia Representative Office
Tambun-17510, Bekasi, Jawa Barat
info@zoller-in.com | www.zoller-in.com

SINGAPORE

ZOLLER Singapore Pte. Ltd
SG-199589 Singapore
info@zoller-in.com | www.zoller.info

MALAYSIA

ZOLLER MALAYSIA SDN. BHD.
Malaysia Representative Office
MY-Petaling Jaya | Selangor Darul Ehsan, Malaysia
lau@zoller-my.com | www.zoller-in.com

VIETNAM

ZOLLER Vietnam
VNM-Ho Chi Minh City, Vietnam
info@zoller-in.com | www.zoller-in.com

KOREA

ZOLLER Korea Co., Ltd.
KOR-15119 - Siheung-Si, Gyeonggi-Do, Südkorea
info@zoller-kr.com | www.zoller-kr.com

REPRESENTATIVES

Argentina, Australia, Belgium, Bolivia, Chile, Colombia, Costa Rica, Croatia, Denmark, Estonia, Finland, Great Britain, Hungary, Iran, Ireland, Italy, Lettland, Latvia, Luxembourg, New Zealand, The Netherlands, Norway, Pakistan, Peru, Romania, Saudi Arabia, South Africa, Southern Tyrol, Taiwan, United Arab Emirates, Venezuela.



Your Customer Portal
www.myzoller.com

simple. direct. online.

ZOLLER Solutions

More speed, higher quality, safe processes – with ZOLLER, you increase the efficiency of your production. ZOLLER offers you outstandingly precise devices for adjusting, measuring and testing cutting tools, software, interfaces, cloud services and solutions for the automation of tool processes. You can combine all of this to create your individual system solution – on your way to the smart factory.

Presetting & Measuring

Tool Management

Inspection & Measuring

Automation

Everything from a Single Source.
Everything for your Success.
Everything with ZOLLER Solutions.

ZOLLER
expect great measures

Headquarters in Pleidelsheim

E. ZOLLER GmbH & Co. KG

Tool presetter and measuring machines

Gottlieb-Daimler-Straße 19 | D-74385 Pleidelsheim

Phone: +49 7144 8970-0 | Fax: +49 7144 8970-70191

post@zoller.info | www.zoller.info