

»toolStation« Workbench

Everything for economical tool (data) handling from one single source. With the »toolStation« workbench from ZOLLER, you complete the hardware for your tool storage and offer your employees a comfortable working environment for tool assembly.



For ergonomic and comfortable tool assembly: the ZOLLER »toolStation« workbench here version big »toolStation« with rear panel and two »toolOrganizer«

FLYERTOOLSTATION

The ZOLLER »toolStation« workbench offers a spacious, illuminated place for the comfortable assembly of your tools. The perforated rear panel enables you to attach standard peg hooks for storing hand tools and accessories. The cable channel ledge on the worktop includes plug sockets and network connection. When combined with ZOLLER TMS Tool Management Solutions software and ZOLLER »toolOrganizer« tool cabinets, the necessary components and accessories are always to hand during tool assembly.

Options:

- Monitor and monitor holding bracket on the rear panel for the use of TMS Tool Management Solutions directly in the workplace
- Rear panel with lighting system

Layout:

- One table leg and one ZOLLER »toolOrganizer« tool cabinet
- Two »toolOrganizer« tool cabinets

Benefits:

- Ergonomic handling increases the quality of work and minimizes health risks during tool assembly.
- Structured storage of complete tools, tool components and accessories ensures an orderly tool preparation process.
- The graphic display of the storage location in the software and directly on the tool cabinet via LEDs as well as control via the network ensure intuitive operation.

Requirements (electronic version):

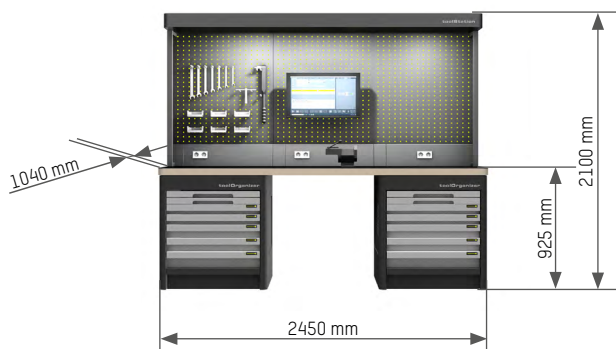
- Table electronics
- TMS Tool Management Solutions workstation (external computer)

Software:

- ZOLLER Smart Cabinets basic package (item no. 8712131)
- ZOLLER TMS software version 1.18.23 or higher, with interface 8774212
- Integration TMS (item no. 8712146)

»toolStation« Workbench: Possible configurations

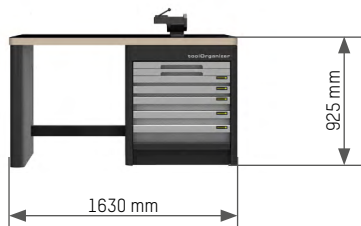
1 Select the size



Medium-sized »toolStation«, with rear panel and 2 »toolOrganizer«

Dimensions:

Total height with rear panel	2100 mm
Table height	925 mm
Width of the workbench	2450 mm
Depth of the workbench	1040 mm



Small »toolStation«, without rear panel, with one »toolOrganizer« on the left-hand side

Dimensions:

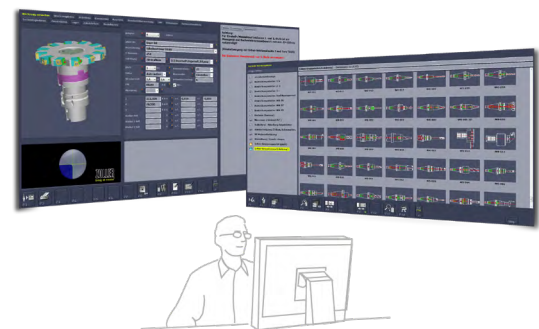
Table height	925 mm
Width of the workbench	1630 mm
Depth of the workbench	1040 mm

2 Select the control type

Monitor with installation kit and »quickPick« V2 control software
(Item no. WZV0403-011)



TMS Tool Management Solutions **workstation**
(external PC)



»toolStation« Workbench: Possible configurations

3 Select the configuration of the »toolStation«, optionally with one or two »toolOrganizer«

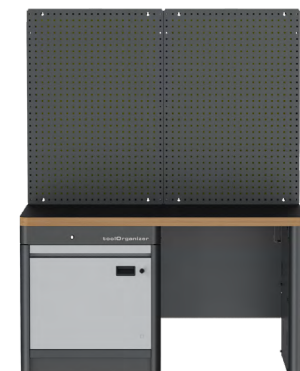
Medium-sized »toolStation« with rear panel



Small »toolStation« with simple rear panel



Medium-sized »toolStation« without rear panel



PRESETTING & MEASURING

TOOL MANAGEMENT

INSPECTION & MEASURING

AUTOMATION



2024-08-21 / Version 07 / kri

Subject to technical modifications

E. ZOLLER GmbH & Co. KG | Einstell- und Messgeräte
Gottlieb-Daimler-Straße 19 | 74385 Pleidelsheim | Germany
Phone +49 7144 8970-0 | Fax +49 7144 8060807
post@zoller.info | www.zoller.info

ZOLLER
expect great measures

»toolStation« Workbench: Possible configurations

4 Select the design of the »toolOrganizer«

Mechanical cabinet



Locking mechanism with central lock



75 mm drawer with door

Electronic cabinet



Electronic drawer lock



Electronic simple compartment locking mechanism

5 Select the drawer heights



Drawer height 75 mm



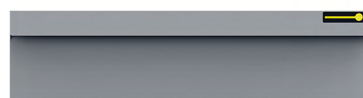
Drawer height 100 mm



Drawer height 125 mm



Drawer height 150 mm



Drawer height 175 mm



Drawer height 200 mm



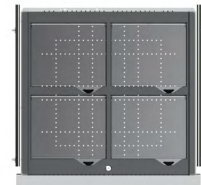
Drawer height 250 mm



Drawer height 300 mm

Drawers are always installed in the cabinet from smaller (top) to larger (bottom).

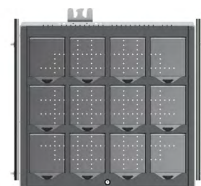
6 Select the drawer divisions combined with partitions



4 compartments



8 compartments



12 compartments



16 compartments



24 compartments



36 compartments

Drawer type: Mechanical lock

Drawers with mechanical locks can be opened at any time.
Each compartment is always accessible.



Drawer with partitions for 24 compartments

Each drawer can also be fitted with partitions for 12, 16, 24 or 48 compartments to keep the inventory clearly organized. The compartment sizes can be varied according to the grid.

Dimensions of usable area:
602 x 602 mm

Drawer height	Mechanical drawer item no.	Partitions			
		12 compartments	16 compartments	24 compartments	48 compartments
75 mm	WZV0001-020	WZV0002-31	WZV0002-32	WZV0002-33	WZV0002-34
100 mm	WZV0001-021	WZV0002-14	WZV0002-15	WZV0002-16	WZV0002-17
125 mm	WZV0001-022	WZV0002-14	WZV0002-15	WZV0002-16	WZV0002-17
150 mm	WZV0001-023	WZV0002-18	WZV0002-19	WZV0002-20	WZV0002-21
175 mm	WZV0001-024	WZV0002-18	WZV0002-19	WZV0002-20	WZV0002-21
200 mm	WZV0001-025	WZV0002-22	WZV0002-23	WZV0002-24	-
250 mm	WZV0001-026	WZV0002-25	WZV0002-26	WZV0002-27	-
300 mm	WZV0001-027	WZV0002-28	WZV0002-29	WZV0002-30	-

Drawer type: Electronic lock

Electronically locked drawers only open after being released.
Once the drawer is open, every compartment is accessible.



Drawer with partitions for 24 compartments

Each drawer can also be fitted with partitions for 12, 16, 24 or 48 compartments to keep the inventory clearly organized. The compartment sizes can be varied according to the grid.

Dimensions of usable area:
602 x 602 mm

Drawer height	Electronic drawer item no.	Partitions			
		12 compartments	16 compartments	24 compartments	48 compartments
75 mm	WZV0001-011	WZV0002-31	WZV0002-32	WZV0002-33	WZV0002-34
100 mm	WZV0001-04	WZV0002-14	WZV0002-15	WZV0002-16	WZV0002-17
125 mm	WZV0001-012	WZV0002-14	WZV0002-15	WZV0002-16	WZV0002-17
150 mm	WZV0001-05	WZV0002-18	WZV0002-19	WZV0002-20	WZV0002-21
175 mm	WZV0001-08	WZV0002-18	WZV0002-19	WZV0002-20	WZV0002-21
200 mm	WZV0001-06	WZV0002-22	WZV0002-23	WZV0002-24	-
250 mm	WZV0001-013	WZV0002-25	WZV0002-26	WZV0002-27	-
300 mm	WZV0001-014	WZV0002-28	WZV0002-29	WZV0002-30	-

Individual partitions

Based on the compartment grid, the partitions can be freely placed within the drawer in order to keep your inventory clearly organized.



Drawer with partitions for 24 compartments

The partitions can also be individually compiled.

Dimensions of usable area:
602 x 602 mm

Drawer height	Slotted plate 610 mm	Partition plate 305 mm	Partition plate 152,5 mm	Partition plate 101,6 mm	Fixing screw
75 mm	WZV0002-044	WZV0002-045	WZV0002-046	WZV0002-047	Z05-M5X6DIN7500
100/125 mm	WZV0002-025	WZV0002-026	WZV0002-027	WZV0002-028	Z05-M5X6DIN7500
150/175 mm	WZV0002-030	WZV0002-031	WZV0002-032	WZV0002-033	Z05-M5X6DIN7500
200 mm	WZV0002-035	WZV0002-036	WZV0002-037	-	Z05-M5X6DIN7500
250 mm	WZV0002-038	WZV0002-039	WZV0002-040	-	Z05-M5X6DIN7500
300 mm	WZV0002-041	WZV0002-042	WZV0002-043	-	Z05-M5X6DIN7500



Mechanical drawer type: Single compartment lock

For drawers with single compartment locks, there is a separate plastic lid above each compartment. This opens electronically when the corresponding compartment is selected via the control unit. This means that items can only be removed from one compartment. Furthermore, the remover can be tracked. This increases transparency. Once the lid is closed, the compartment is locked again electronically.

If these drawers are combined with the mechanical cabinet lock, the drawers can be pulled open and the stock can be checked, but nothing can be taken out directly.

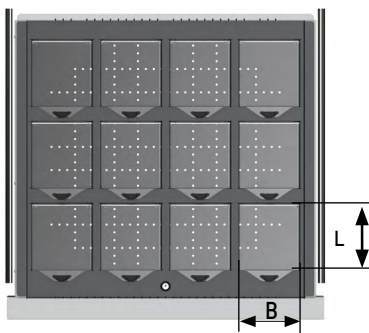
The partitions are inserted into the drawers to create the individual compartments.

These partitions depend on the drawer front height: The higher the drawer, the higher the partitions.

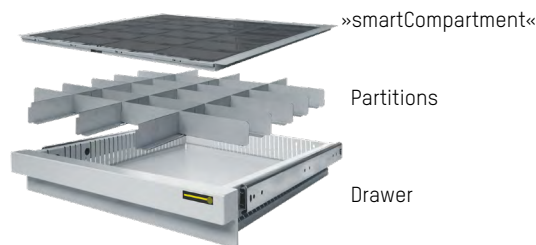
The »smartCompartment« is fitted precisely onto the selected partitions.

The »smartCompartment« can have either 4, 8, 12, 16, 24 or 36 compartments. For reasons of space, the »smartCompartment« for 36 compartments can only be used in combination with the drawer panel heights 75/100/125/150 mm.

Dimensions of usable area:
602 x 602 mm



Drawer with 12 compartments and single compartment locks



Drawer components

»smartCompartment«	4 compartments	8 compartments	12 compartments	16 compartments	24 compartments	36 compartments
Compartment width in mm	278	129	129	129	129	90
Compartment length in mm	237	237	148	103	58	58
Compartment depth in mm	19 mm less than drawer height	19 mm less than drawer height	19 mm less than drawer height	19 mm less than drawer height	19 mm less than drawer height	19 mm less than drawer height

»toolOrganizer« Workbench: Configure your favourite model

Workbench	medium-sized »toolStation«	small »toolStation«	»toolStation« with rear panel	»toolStation« with simple rear panel
Control system	monitor other smart cabinet without control system	ZOLLER TMS workstation (external PC)		
	»toolOrganizer«, left side	table leg, left side		

Drawer left side	Height (in mm)									Drawer lock type*		Partitioning		Number of compartments							
	Nr.	75	100	125	150	175	200	250	300	mechanical	electronic	Partitions	SmartCom-partment ²⁾	4 ¹⁾	8 ¹⁾	12	16	24	36	48 ⁴⁾	
1																					
2																					
3																					
4																					
5																					
6																					
7																					
8																					
9																					
10																					
11																					
12																					

»toolOrganizer«, right side Table leg, right side

Drawer right side	Height (in mm)									Drawer lock type*		Partitioning		Number of compartments							
	Nr.	75	100	125	150	175	200	250	300	mechanical	electronic	Partitions	SmartCom-partment ²⁾	4 ¹⁾	8 ¹⁾	12	16	24	36	48 ⁴⁾	
1																					
2																					
3																					
4																					
5																					
6																					
7																					
8																					
9																					
10																					
11																					
12																					

Total height is 600 mm

mechanical cabinet

electronic cabinet

* The number of drawers can vary with the **mechanically** locked cabinet. With the **electronic** version, each cabinet has a maximum of 20 drawers.

¹⁾ 4 and 8 compartments only available for »smartCompartment«

²⁾ 36 compartments only available for drawer heights 75/100/125/150 mm

³⁾ only available for mechanically locked drawers

⁴⁾ only partitions, not available for »smartCompartment«

Print flyer to save changes

